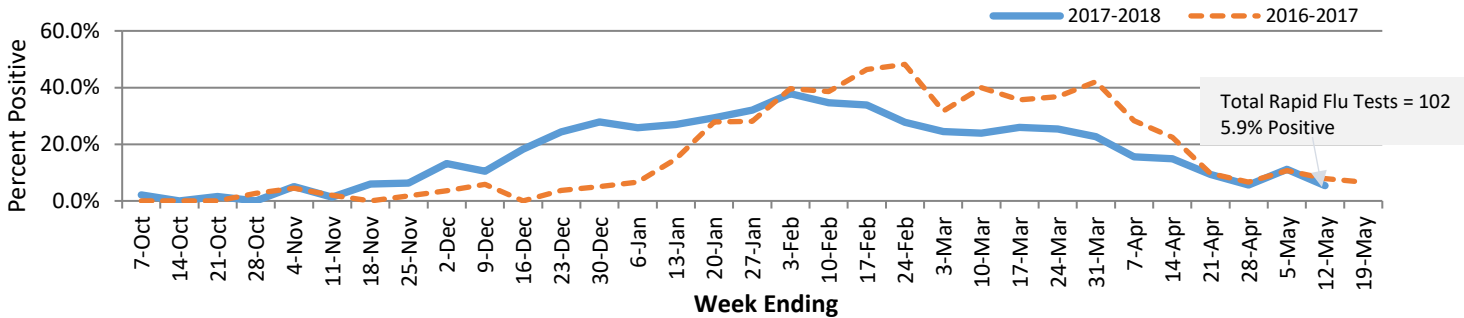


# McHenry County Department of Health 2017-18 Influenza Surveillance

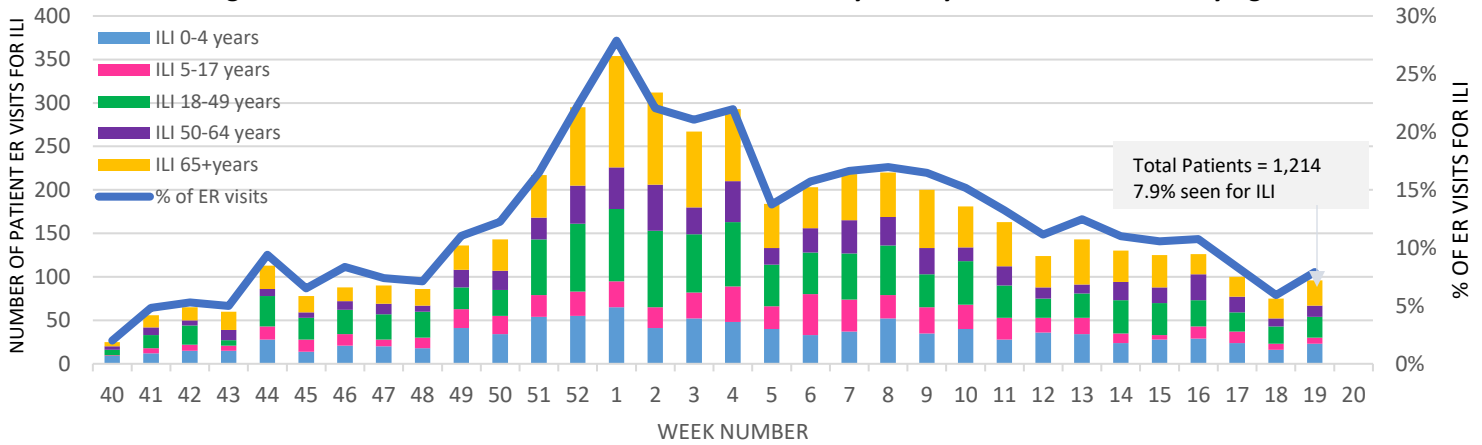
## October 1<sup>st</sup>, 2017 – May 12<sup>th</sup>, 2018 (Weeks 40-19)

The McHenry County Department of Health (MCDH) annually conducts influenza surveillance through two different systems. The first system is based on weekly reporting of sentinel healthcare sites of rapid test-positive influenza cases (Figure 1a) and number of clients seen with influenza-like illness (ILI) (Figure 1b), which is defined as a fever  $\geq 100^{\circ}$  and cough and/or sore throat in the absence of a known cause other than influenza (note: all cases of ILI were reported by sentinel sites, not just ER cases). The second system is a daily reporting of school absenteeism and absenteeism due to ILI (figure2).

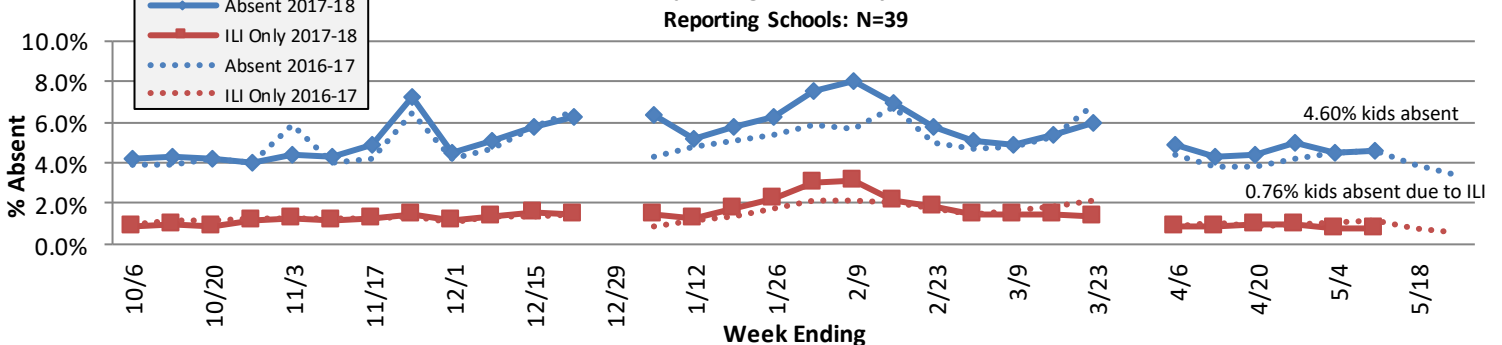
**Figure 1a. Percent of Rapid Influenza Tests that are Positive at McHenry County**



**Figure 1b. Influenza-Like-Illness Surveillance in McHenry County: Percent of ILI Visits by Age**



**Figure 2. School Surveillance: Average Total Daily Absenteeism and ILI-Related Absenteeism Rate for All Reporting Schools by Week**



MCDH has identified 16 influenza outbreaks at long term care facilities\* in the 2017-2018 flu season.

\*facilities can have subsequent outbreaks, which are counted separately.

For **National Influenza Surveillance**, visit the US Centers for Disease Control and Prevention Influenza Surveillance website at: <http://www.cdc.gov/flu/weekly/>



*“Working to prevent disease and promote health and safety for all people of McHenry County since 1966.”*

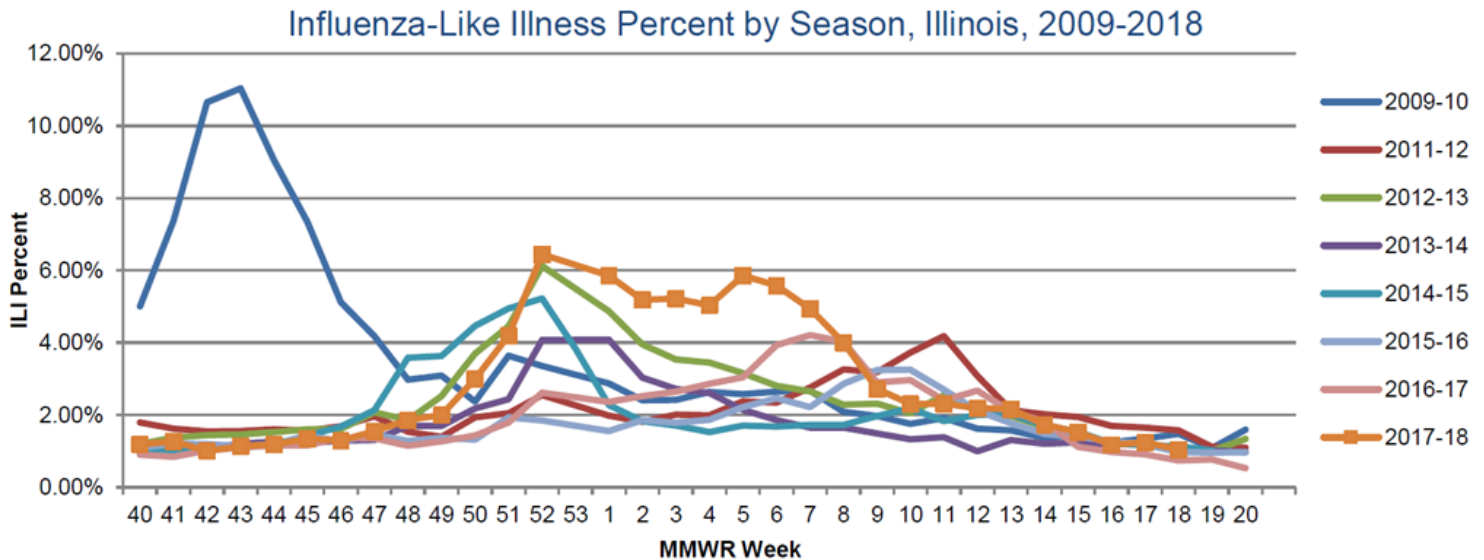
Updated on:  
10/19/2018

# McHenry County Department of Health 2017-18 Influenza Surveillance

October 1<sup>st</sup>, 2017 – May 12<sup>th</sup>, 2018 (Weeks 40-19)

The state of Illinois reports flu activity on a weekly basis from sentinel hospitals throughout the state. For more information on Influenza in the state of Illinois please see <http://www.dph.illinois.gov/topics-services/diseases-and-conditions/influenza/surveillance>

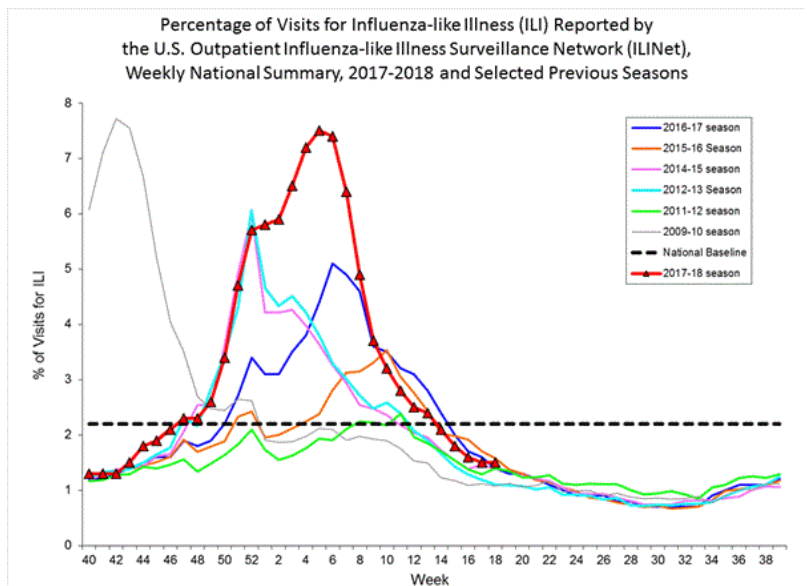
## Illinois Sentinel Influenza-Like Illness (ILI) Surveillance



## FluView: Weekly U.S. Influenza Surveillance Report: Summary (Week 18 ending 5/5/2018)

(<http://www.cdc.gov/flu/weekly/>)

- During week 18, influenza activity continued to decrease in the United States.
- During week 18 the percent of submitted specimens testing positive was 6.5%, a decrease from previous weeks. Of the specimens testing positive for influenza, 35% were influenza A and 65% were influenza B. Since week 40, 18.9% of specimens submitted were positive. Of the positive specimens, 67.7% were positive for influenza A, 32.3% positive for influenza B.
- During week 18 the proportion of outpatient visits for ILI remained at 1.5% which is below the national baseline of 2.2%.
- The proportion of deaths attributed to pneumonia and influenza was 6.0% for week 16 which was below the national epidemic threshold of 7.0% for week 16.
- 165 pediatric deaths have been reported during the 2017-2018 flu season. Additional data can be found at: <http://gis.cdc.gov/GRASP/Fluview/PedFluDeath.html>.



\* Illinois and CDC data is only available through week 18 at the time of this report.

For **National Influenza Surveillance**, visit the US Centers for Disease Control and Prevention Influenza Surveillance website at: <http://www.cdc.gov/flu/weekly/>



*"Working to prevent disease and promote health and safety for all people of McHenry County since 1966."*

Updated on:  
10/19/2018