

ORDINANCE**TO DESIGNATE THE EXCLUSIVE COLLECTOR OF
SOLID WASTE, RECYCLABLES AND YARDWASTE IN CERTAIN AREAS OF
UNINCORPORATED MCHENRY COUNTY**

WHEREAS, the McHenry County Department of Health (Department) has been given the responsibility to increase the amount of waste materials that are beneficially reused (recycled) to meet the objectives detailed in the County Board adopted McHenry County Solid Waste Plan; and

WHEREAS, the Department has also been given the responsibility to enforce the open burning of yard waste restrictions and to develop cost effective options for yard waste disposal; and

WHEREAS, authority for Counties to designate solid waste collection services in unincorporated areas is provided for in 55 ILCS 5/5-1048, and

WHEREAS, certain areas have been identified in unincorporated McHenry County that because of the density of home and mature tree cover would benefit from a comprehensive solid waste collection program; and

WHEREAS, the designation of an exclusive contractor for waste disposal services should reduce overall waste disposal cost, improve recycling rates, improve air quality, reduce wear and tear on streets and provide a viable alternative to the open burning of yard waste in certain areas of unincorporated McHenry County; and

WHEREAS, the County Purchasing Department Director solicited bids from thirty-five waste disposal companies and received four responsive bids to provide the requested waste disposal services; and

WHEREAS, all those that placed bids were interviewed and the lowest most responsive and responsible bidder has been selected; and

WHEREAS, the residents in the impacted areas have been notified of the county proposal to contract for exclusive waste collection in their areas and given the opportunity to provide input through public meetings, telephone, email or written form; and

WHEREAS, the Public Health and Human Services and the Natural and Environmental Resources Committees of the County Board have received said public input and have approved the exclusive collection of solid waste in the specific areas detailed on the attached maps to Groot Disposal; and

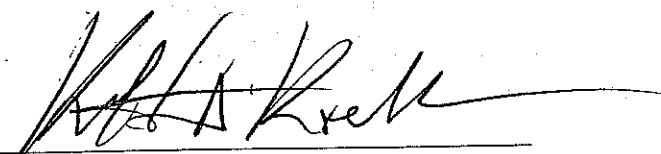
NOW THEREFORE BE IT ORDAINED, by this County Board of McHenry County Illinois that the exclusive collection of solid wastes per the attached bid specification for the specific areas of the attached maps is awarded to Groot Industries for a period of time from February 1, 2010 through January 31, 2013; and

BE IT FURTHER ORDAINED, that this ordinance maybe rescinded by this Board with a 30 day notice to Groot Disposal for nonperformance of the bid specifications; and

BE IT FURTHER ORDAINED, that the County Clerk is hereby requested to distribute a certified copy of this ordinance to the Department of Health Administrator and the County Administrator; and


BE IT FURTHER ORDAINED that this ordinance will be in effect on December 15, 2009 with an implementation date of February 1, 2010

DATED at Woodstock, Illinois, this 15th day of December in the year 2009.



Kenneth D. Koehler, Chairman
McHenry County Board

ATTEST:



Katherine C. Schultz, County Clerk

Recommended Program for Franchised Solid Waste Removal Services

Recommended Vendor for All Areas: Groot Industries

Includes garbage/refuse, recycling & landscape waste curbside pick-up services	QUARTERLY COST ESTIMATES		
	Year 1	Year 2	Year 3
90-gal (approx. size) refuse toter	\$68.49	\$71.23	\$74.08
64-gal (approx size) refuse toter	\$63.84	\$66.39	\$69.05
35-gal (approx size) refuse toter	\$60.84	\$63.27	\$65.80
By-the-bag (refuse)	\$3.00/bag + \$28.59/quarter	\$3.12/bag + \$29.73/quarter	\$3.24/bag + \$30.92/quarter

Program Components:

1. Applies to residential properties only
2. Three (3) year contract cycle: Year 1: Implementation Date – November 30, 2010; Year 2: December 1, 2010 – November 30, 2011; Year 3: December 1, 2011 – November 30, 2012.
3. Participants are billed directly by the vendor on a quarterly basis.
4. Participants must subscribe to all of the program services.
5. Covered wheeled toters provided for garbage/refuse. Cost based upon size of container.
6. By-the –Bag program for garbage/refuse with stickers purchased and placed on 32 gallon garbage bags.
7. Unlimited recycling includes a 95-gallon covered, wheeled toter with pick up every other week.
8. Unlimited curbside pick- up of landscape waste April-December (customer may use Kraft paper bags or clearly marked containers.)
9. 1 bulk item/week (i.e. furniture, mattresses, box springs, televisions. Does not include white goods.)
- 10.3 Loose Leaf pick-ups (1 in Spring and 2 in Fall)
11. Special collections can be pre-arranged with vendor for an additional cost.

Minimum Recyclable Materials to be Collected

Paper Items:	Non-Paper items:
<ul style="list-style-type: none"> • Corrugated cardboard • Chipboard (paperboard) • Newspaper • Magazines, telephone books, catalogs, and junk mail • Brown Kraft paper bags • Mixed or miscellaneous paper products 	<ul style="list-style-type: none"> • Tin, steel, bi-metal beverage and food cans • Aluminum cans and foil • Plastics - #1-7 • "PET", "PETE", "HDPE", "V", "LPDE", "PP", "PS" • Clear, green, and brown glass including bottles and jars

Educational materials will be provided by Vendor to all residents in the service areas outlining the available services.

Performance criteria will be included in the contract to ensure consistent, reliable service and prompt response to and resolution of consumer complaints.

Bid/RFP 09-32 Services to Provide Residential Waste Hauling
Phase I Implementation Date – November 30, 2010

	LAKES DISPOSAL			MDC ENVIRONMENTAL			GROOT			WASTE MANAGEMENT		
	AREA 1	AREA 2	AREA 3	AREA 1	AREA 2	AREA 3	AREA 1	AREA 2	AREA 3	AREA 1	AREA 2	AREA 3
Monthly Charge for:												
90-gal refuse toter*	\$15.51	\$15.51	\$14.10	\$31.00	\$31.00	NO BID	\$13.30	\$13.30	\$13.30	\$14.48	\$14.48	\$14.48
64-gal refuse toter *	\$12.92	\$12.92	\$11.75	\$30.00	\$30.00		\$11.75	\$11.75	\$11.75	\$14.35	\$14.35	\$14.35
35-gal refuse toter*	\$10.85	\$10.85	\$9.87	\$29.00	\$29.00		\$10.75	\$10.75	\$10.75	\$13.88	\$13.88	\$13.88
By-the-bag (refuse*)	\$2.40	\$2.40	\$2.40	\$4.00	\$4.00		\$3.00	\$3.00	\$3.00	\$3.00	\$3.00	\$3.00
64-gal recycling toter	\$5.00	\$5.00	\$4.70	Included	Included		\$6.04	\$6.04	\$6.04	\$5.52	\$5.52	\$5.52
Landscape Waste curbside pickup**	\$7.15	\$7.15	\$6.50	Included	Included		\$4.58	\$4.58	\$4.58	\$2.99	\$2.99	\$2.99
Landscape Waste drop off site – 1 Saturday/month (Apr – Dec)	\$0.00	\$0.00	\$0.00	Included	Included		\$0.56	\$0.56	\$0.56	****	****	****

Phase II December 1, 2010 – November 30, 2011

	LAKES DISPOSAL			MDC ENVIRONMENTAL			GROOT			WASTE MANAGEMENT		
	AREA 1	AREA 2	AREA 3	AREA 1	AREA 2	AREA 3	AREA 1	AREA 2	AREA 3	AREA 1	AREA 2	AREA 3
Monthly Charge for:												
90-gal refuse toter*	\$15.98	\$15.98	\$14.52	\$32.55	\$32.55	NO BID	\$13.83	\$13.83	\$13.83	\$15.06	\$15.06	\$15.06
64-gal refuse toter *	\$13.31	\$13.31	\$12.00	\$31.50	\$31.50		\$12.22	\$12.22	\$12.22	\$14.93	\$14.93	\$14.93
35-gal refuse toter*	\$11.18	\$11.18	\$10.17	\$30.45	\$30.45		\$11.22	\$11.22	\$11.22	\$14.44	\$14.44	\$14.44
By-the-bag (refuse*)	\$2.50	\$2.50	\$2.50	\$4.20	\$4.20		\$3.12	\$3.12	\$3.12	\$3.12	\$3.12	\$3.12
64-gal recycling toter	\$5.15	\$5.15	\$4.85	Included	Included		\$6.28	\$6.28	\$6.28	\$5.74	\$5.74	\$5.74
Landscape Waste curbside pickup**	\$7.36	\$7.36	\$6.70	Included	Included		\$4.76	\$4.76	\$4.76	\$3.11	\$3.11	\$3.11
Landscape Waste drop off site – 1 Saturday/month (Apr – Dec)	\$0.00	\$0.00	\$0.00	Included	Included		\$0.58	\$0.58	\$0.58	****	****	****

Phase III December 1, 2011 – November 30, 2012

	LAKES DISPOSAL			MDC ENVIRONMENTAL			GROOT			WASTE MANAGEMENT		
	AREA 1	AREA 2	AREA 3	AREA 1	AREA 2	AREA 3	AREA 1	AREA 2	AREA 3	AREA 1	AREA 2	AREA 3
Monthly Charge for:												
90-gal refuse toter*	\$16.46	\$16.46	\$14.96	\$34.20	\$34.20	NO BID	\$14.38	\$14.38	\$14.38	\$15.67	\$15.67	\$15.67
64-gal refuse toter *	\$13.71	\$13.71	\$12.36	\$33.10	\$33.10		\$12.71	\$12.71	\$12.71	\$15.52	\$15.52	\$15.52
35-gal refuse toter*	\$11.52	\$11.52	\$10.48	\$32.00	\$32.00		\$11.71	\$11.71	\$11.71	\$15.02	\$15.02	\$15.02
By-the-bag (refuse*)	\$2.60	\$2.60	\$2.60	\$4.45	\$4.45		\$3.24	\$3.24	\$3.24	\$3.24	\$3.24	\$3.24
64-gal recycling toter	\$5.30	\$5.30	\$5.00	Included	Included		\$6.53	\$6.53	\$6.53	\$5.97	\$5.97	\$5.97
Landscape Waste curbside pickup**	\$7.58	\$7.58	\$6.90	Included	Included		\$4.95	\$4.95	\$4.95	\$3.23	\$3.23	\$3.23
Landscape Waste drop off site – 1 Saturday/month (Apr – Dec)	\$0.00	\$0.00	\$0.00	Included	Included		\$0.60	\$0.60	\$0.60	****	****	****

*Includes either 1 bulk item/week ** Includes 3 loose leaf curbside pickup (May, October, November)

NOTES:

Lakes Disposal charges:

\$10 per extra yard of refuse
\$5 additional 96-gal refuse toter with existing 96-gal refuse toter service

MDC Environmental charges:

Residents choosing "By-the-bag" option must enroll in service and will be assessed a pre-paid annual \$240 subscription fee in Year 1, \$250 subscription fee in Year 2 and \$265 subscription fee in Year 3.

Groot charges:

Anticipate start date December 1, 2009. 60 days avg. transition, but Groot can implement the program with less time if needed.

Waste Management charges:

Landscape waste drop off site \$100/hour and \$14/yd³ (billed to County)
Construction debris \$20/yd³ (residents must call ahead for schedule)
\$45/appliance (residents must call ahead for schedule)
Submitted bid includes 3 loose leaf curbside pick-up (May, October, November)

**SUMMARY OF PUBLIC COMMENTS
PROPOSAL FOR FRANCHISING SOLID WASTE REMOVAL SERVICES**

Public Meetings:



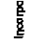
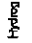
1. Pistakee Highlands Area: Notification to 1658 households; 59 in attendance; and
2. Wonder Lake Areas: Notifications to 2597 households; 45 in attendance

Additional comments received via email, mail, telephone and personal contact

Summary of Comments received as of November 6, 2009	Pistakee Highlands	Wonder Lake	No Location Provided	TOTALS
SUPPORTS SOLID WASTE FRANCHISE AGREEMENT. Expressed support of the following: Cost estimates, landscape waste removal services, by-the-bag option, covered wheeled totes and reduction in truck traffic	22	36	4	62
OPPOSES SOLID WASTE FRANCHISE AGREEMENT: Expressed the following concerns: Opposed to government involvement in waste hauling services, wants ability to choose waste hauler, accountability for quality of service, franchising eliminates competition, franchising would eliminate jobs, will cost more because they do not need landscape waste removal services, no senior rates	29	13	2	44
REQUESTS FOR INFORMATION/CLARIFICATION	7	10	3	20

Comprehensive Solid Waste Services Area 1

Legend

-  Area 1
-  Road Centerline
-  Incorporated Areas
-  Hydrography (Map Area)

0 305 610 1,220
Foot
1 inch = 300 feet
at original print size of 36" x 24"

Data Source

Map data: Wilkes County GIS and Aerial
Photography
Map data: Wilkes County GIS and Aerial
Photography
Map data: Wilkes County GIS and Aerial
Photography



Map prepared by Wilkes County GIS Dept
Date: June 2009
MAP-ID: 000010-45







Map Information

Project Title:	Comprehensive Solid Waste Services Area 1
Project Number:	000010-45
Project Manager:	[Name]
Project Engineer:	[Name]
Project Designer:	[Name]
Project Checker:	[Name]
Project Date:	June 2009

PRODUCTION OF THIS MAP WAS COMPLETED BY THE WILKES COUNTY GIS DEPARTMENT. THE DATA IS PROVIDED "AS IS" WITHOUT WARRANTY OF ANY KIND, INCLUDING WARRANTIES OF MERCHANTABILITY AND FITNESS FOR A PARTICULAR PURPOSE. THE USER ASSUMES ALL LIABILITY FOR ANY DAMAGE, INCLUDING CONSEQUENTIAL DAMAGES, ARISING FROM THE USE OF THIS MAP. THE USER SHALL BE RESPONSIBLE FOR OBTAINING ALL NECESSARY PERMITS AND RIGHTS FROM THE APPROPRIATE AGENCIES AND INDIVIDUALS. THE USER SHALL BE RESPONSIBLE FOR OBTAINING ALL NECESSARY PERMITS AND RIGHTS FROM THE APPROPRIATE AGENCIES AND INDIVIDUALS.

Comprehensive Solid Waste Services Area 2

Legend

-  Area 2
-  Road Centerlines
-  Incorporated Areas
-  Hydrography (Map Level)

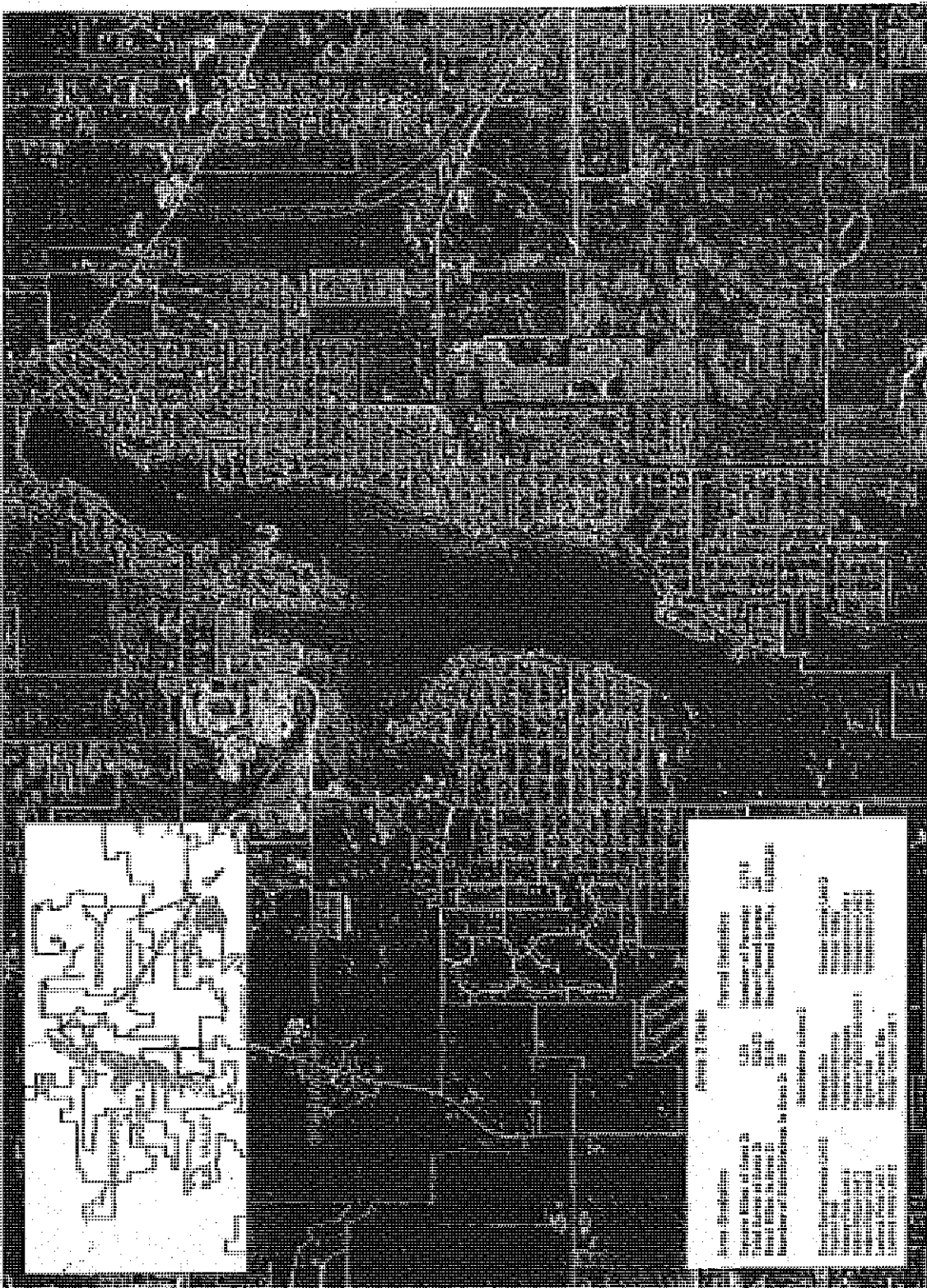
0 900 1,800 3,600
Feet
1 inch = 900 feet
at original print size of 36" x 24"

Data Source

Library/County/Department of Planning
2008 Aerial Orthorectification
Road Centerlines from
Michigan County GIS Department






Map produced by Michigan County GIS Dept.
Date: June 2009
MAP ID: 080910--24



Legend

Area 2

Map Symbols

-  Area 2
-  Road Centerlines
-  Incorporated Areas
-  Hydrography (Map Level)

Map Scale

0 900 1,800 3,600
Feet
1 inch = 900 feet
at original print size of 36" x 24"

Data Source

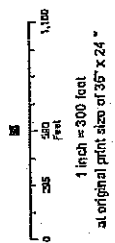
Library/County/Department of Planning
2008 Aerial Orthorectification
Road Centerlines from
Michigan County GIS Department

WARNING: THIS MAP AND CONTAINED DATA OR INFORMATION IS PROVIDED AS IS WITHOUT WARRANTY, REPRESENTATION OR ENDORSEMENT. THE USER ASSUMES ALL LIABILITY FOR ANY AND ALL DAMAGES, INCLUDING ECONOMIC, CONSEQUENTIAL, SPECIAL OR PUNITIVE DAMAGES, ARISING OUT OF OR FROM THE USE OF THIS MAP AND INFORMATION. THE USER ASSUMES ALL LIABILITY FOR ANY AND ALL DAMAGES, INCLUDING ECONOMIC, CONSEQUENTIAL, SPECIAL OR PUNITIVE DAMAGES, ARISING OUT OF OR FROM THE USE OF THIS MAP AND INFORMATION.

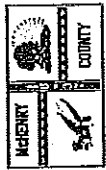
Comprehensive Solid Waste Services Area 2B

Legend

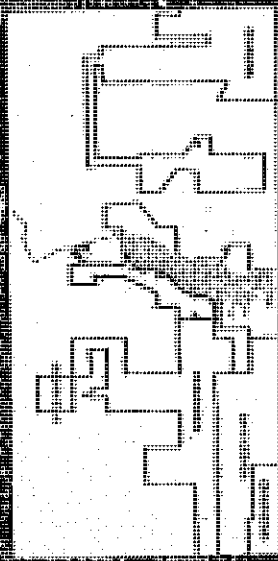
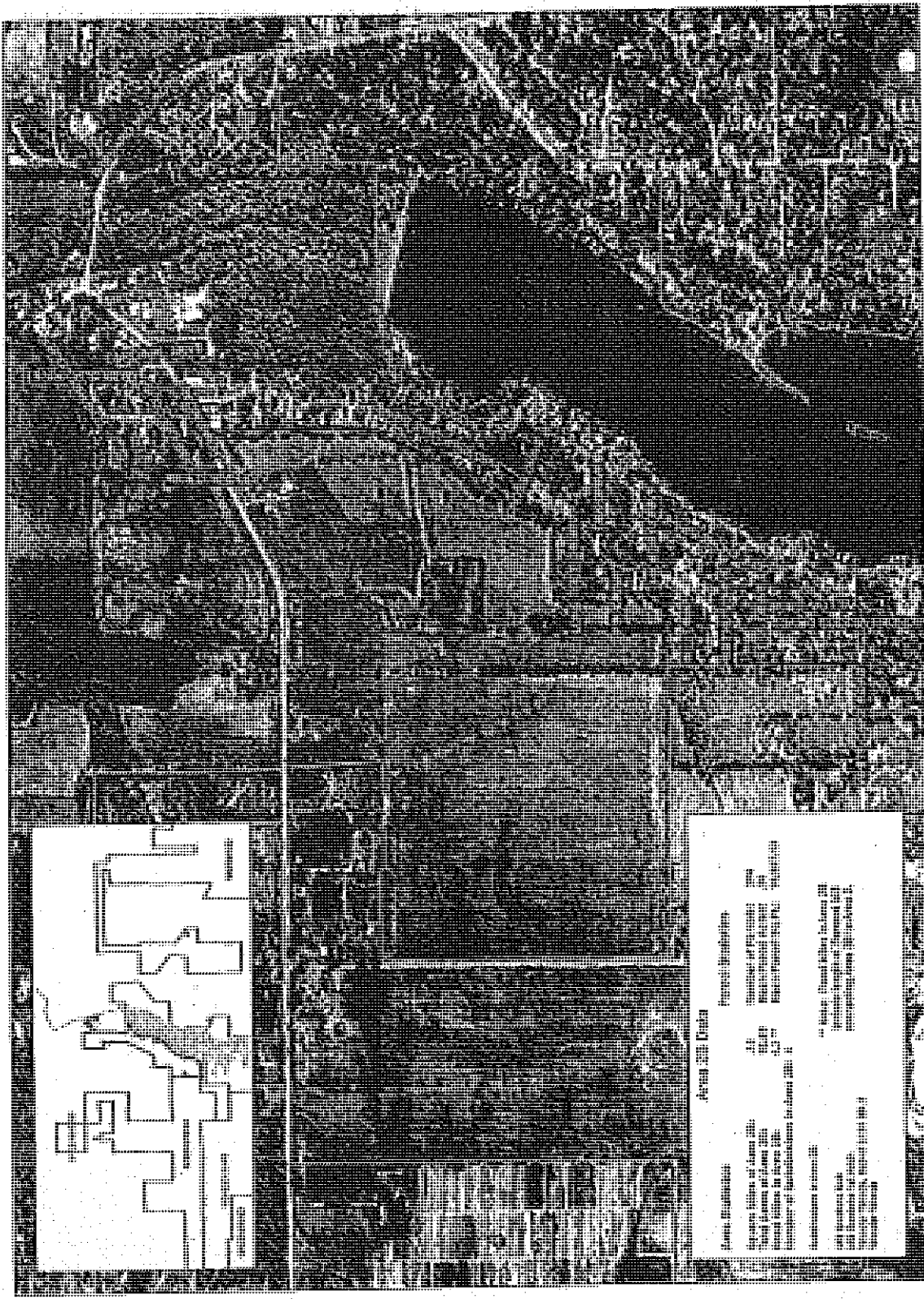
- Road Centerlines
- Area 2B
- Incorporated Areas
- ▨ Hydrography (Map Inset)



Data Source
 Randolph County Planning Board
 2008 Aerial Orthorectification
 2008 Aerial Orthorectification
 2008 Aerial Orthorectification
 2008 Aerial Orthorectification



Map No. SWP-14-20
 Date: October 2007

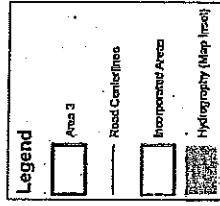


Legend

Symbol	Description
—	Road Centerlines
□	Area 2B
□	Incorporated Areas
▨	Hydrography (Map Inset)

PROVIDER OF THE MAPS AND DATA ON THIS MAP IS RANDOLPH COUNTY PLANNING BOARD. RANDOLPH COUNTY PLANNING BOARD IS NOT RESPONSIBLE FOR ANY ERRORS OR OMISSIONS IN THIS MAP. RANDOLPH COUNTY PLANNING BOARD IS NOT RESPONSIBLE FOR ANY DAMAGES, INCLUDING CONSEQUENTIAL DAMAGES, ARISING FROM THE USE OF THIS MAP. RANDOLPH COUNTY PLANNING BOARD IS NOT RESPONSIBLE FOR ANY DAMAGES, INCLUDING CONSEQUENTIAL DAMAGES, ARISING FROM THE USE OF THIS MAP.

Comprehensive Solid Waste Services Area 3

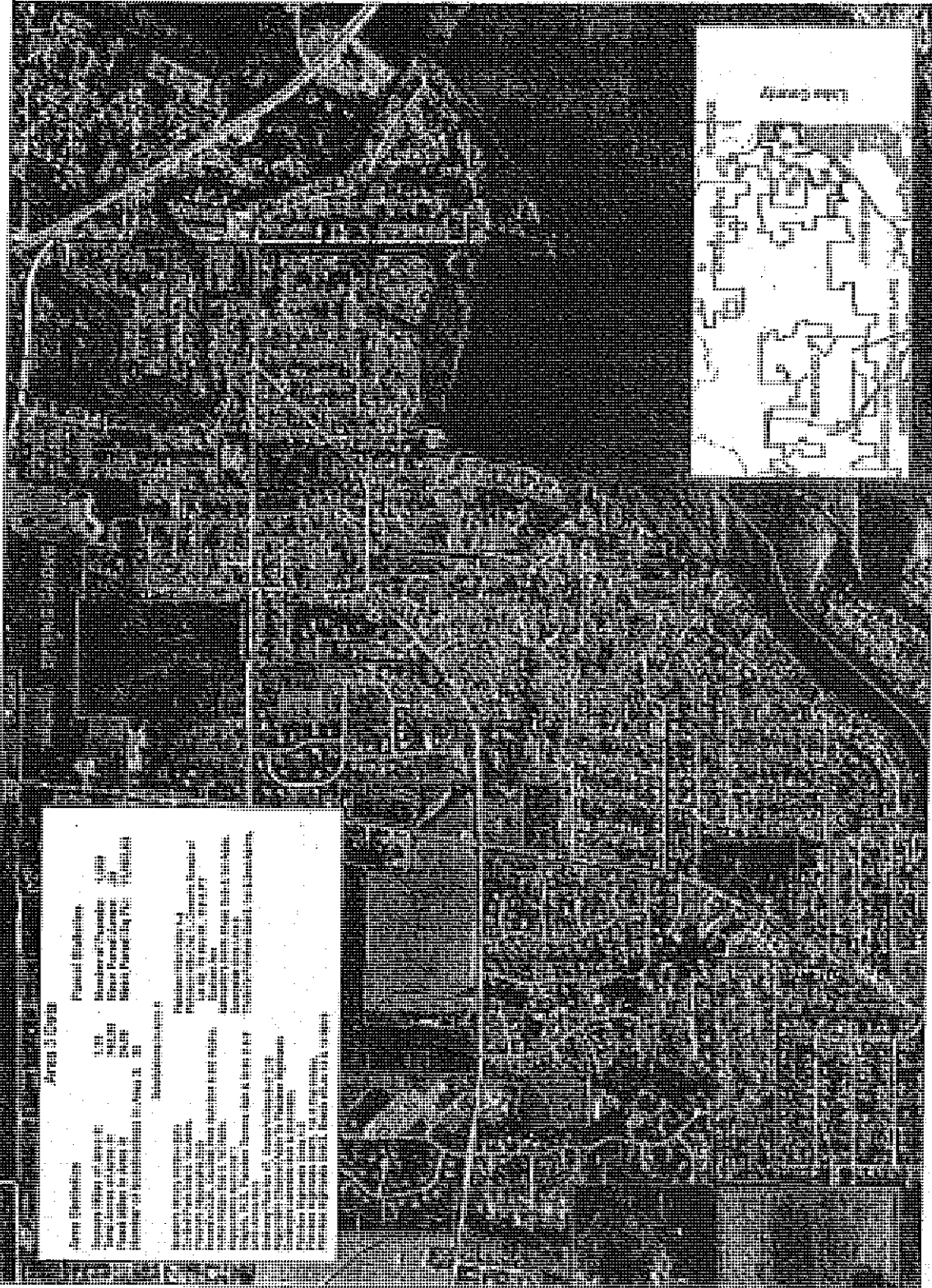


0 500 1,000 2,000
Feet
1 inch = 500 feet
at original print size of 3'6" x 24"

Data Source
www.amsi.net
The Area 3 Hydrography, Road Centerlines, and Incorporated Areas were derived from the following sources:
Hydrography: U.S. Geological Survey
Road Centerlines: Kentucky State Highway Department
Incorporated Areas: Kentucky State Highway Department



Map produced by Kentucky County GIS Dept
Date: June 2010
MAP-ID: 1000119_02



Area 3 Data

General Information

Area 3 ID: 1000119_02
 Date of Data Collection: 2010
 Date of Map Production: 2010
 Project Manager: [Name]
 GIS Specialist: [Name]

Project Description

This project is a GIS-based map showing the geographic area for Solid Waste Services Area 3. The map includes road centerlines, hydrography, and incorporated areas. The data was derived from the following sources: Hydrography: U.S. Geological Survey; Road Centerlines: Kentucky State Highway Department; Incorporated Areas: Kentucky State Highway Department.

Legend

- Area 3
- Road Centerlines
- Incorporated Area
- Hydrography (Map lines)

Data Source

www.amsi.net
 The Area 3 Hydrography, Road Centerlines, and Incorporated Areas were derived from the following sources:
 Hydrography: U.S. Geological Survey
 Road Centerlines: Kentucky State Highway Department
 Incorporated Areas: Kentucky State Highway Department

Map produced by Kentucky County GIS Dept
Date: June 2010
MAP-ID: 1000119_02

STATE OF ILLINOIS)
) SS
COUNTY OF MCHENRY)

I, Katherine C. Schultz, County Clerk within and for said County and State aforesaid, do hereby certify the attached to be a true and complete copy of Ordinance No. O-200912-51-068 To designate the exclusive collector of solid waste, recyclables and yard waste in certain area of unincorporated McHenry County to Grood Industries. WHEREOF I have hereunto subscribed my hand and affixed the official seal of said County, at my office in Woodstock, Illinois this 16th day of December A.D, 2009 .

Katherine C Schultz
McHenry County Clerk