

PLANS MUST BE DRAWN TO ¼"=1' SCALE

FLOOR/FOUNDATION PLANS-

- Wall sizes and locations
- Room use name (bed, den, family, ect)
- Joist and beam location and direction (above)
- Concrete pads/piers and support post sizes and locations
- Header material sizes as well as Door and window locations
- Stair direction and location
- Plumbing and electrical fixture sizes and locations
- Vent and access opening sizes and locations
- Information for decks, stoops, porches, etc

CROSS SECTIONS-

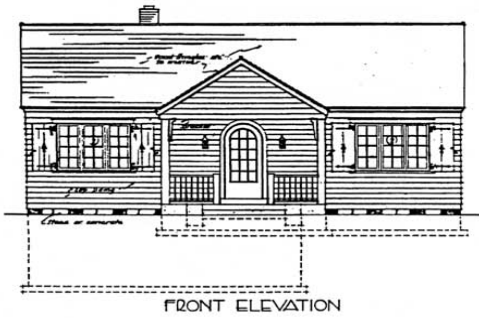
- Foundation and footing sizes and depth as well as grade line
- Drain tile location, gravel fill depth and slab thickness
- Joist and wall material sizes and "on center" spacing
- House wraps and vapor barriers
- Interior and exterior wall coverings
- Insulation location and R values
- Rebar, bolts and any other reinforcements
- Roofing materials (rafters, sheathing, felt paper, shingles, ect)

ELEVATIONS-

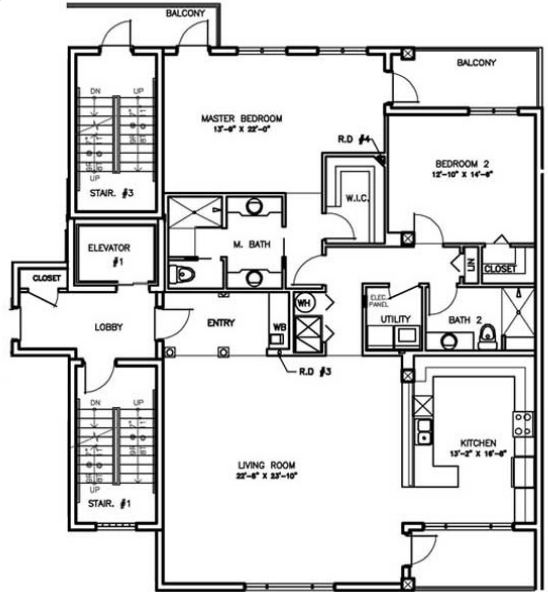
- Overall height measurements of structure
- Window and door types and locations
- Steps, stoops, decks and electrical fixture locations
- Roof vents and roof covering information
- Wall covering information
- Overhang measurements and grade line height related to the foundation/piers

*These are general information requirements. Certain projects may require more detail and information.

Construction Plans @1/4" = 1' are required for new Commercial, Residential, Additions, Alterations and Accessory structures. Below are some examples of what we expect to be submitted.



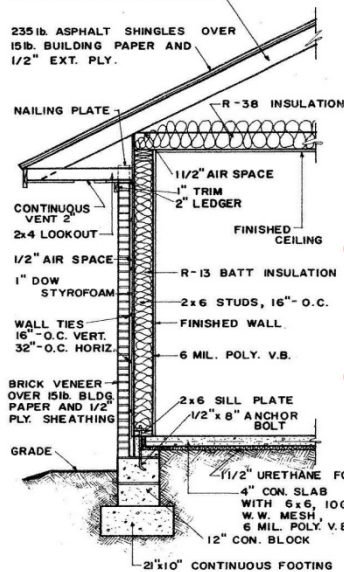
ELEVATION VIEWS



•The floor plan must also include electric, size and direction of joists, rafters, headers etc:

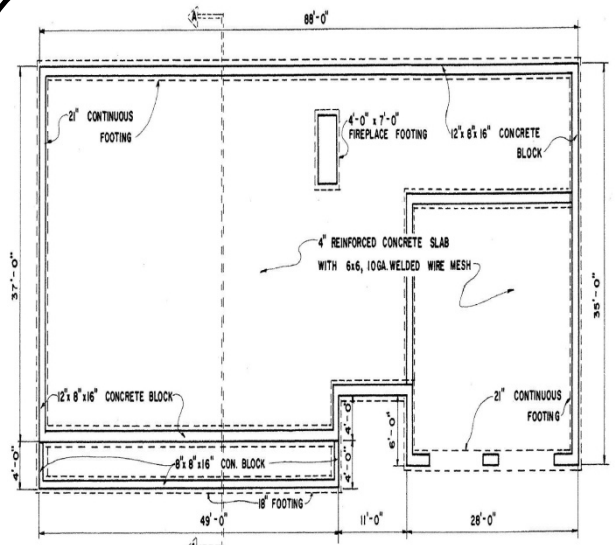
FLOOR PLAN

SELECT TRUSS ACCORDING TO LOCAL BUILDING STANDARDS



•The type of foundation or anchoring will vary depending on the type of structure. A cross section is required for a wood deck. It must show the piers and guard rail.

WALL SECTION/CROSS SECTION



•The type of foundation or anchoring will vary depending on the type of structure, a deck may be on concrete piers and a shed may only require anchoring

FOUNDATION PLAN

These drawings are examples only, they do not reflect McHenry County Code requirements