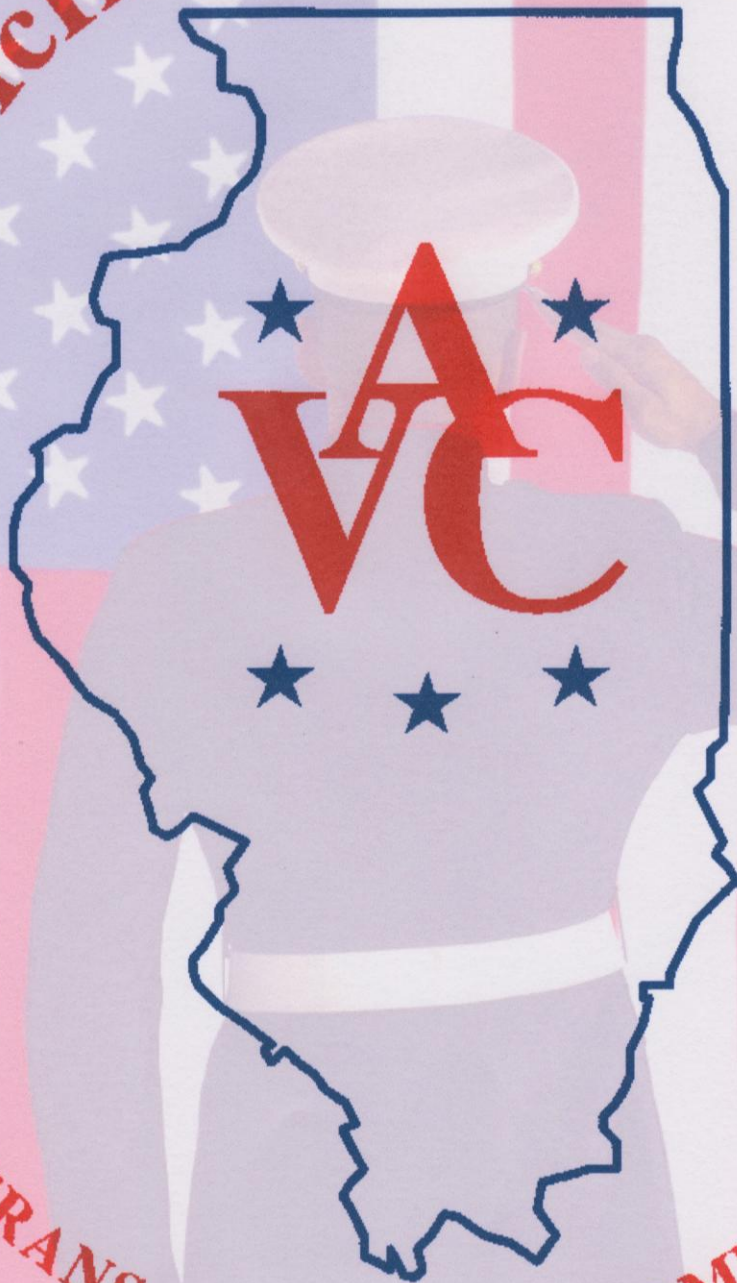


**MCHENRY COUNTY**



**VETERANS ASSISTANCE COMMISSION**

**2010 Annual Report**

Veterans Assistance Commission of McHenry County  
County Government Center / Administrative Building  
2200 N. Seminary Avenue  
Woodstock, Illinois 60098  
(815) 334-4229; Fax (815) 334-4678  
E-mail: veterans@co.mchenry.il.us

From These



Army



Navy



Marine Corps



Coast Guard



Air Force



Merchant Marine



Public Health

To These



VFW



American Legion



Marine Corps League



Polish Legion



American Veterans

**ViệtNow**

VietNow

We Serve The Veteran



# VETERANS ASSISTANCE COMMISSION OF McHENRY COUNTY

2200 North Seminary Avenue

Woodstock, IL 60098

Phone (815) 334-4229 Fax (815) 334-4678 e-mail MAIwanic@co.mchenry.il.us



Michael A. Iwanicki

CVSO

Superintendent

January 1, 2010

The Honorable Pat Quinn  
Governor of Illinois  
State Capital Room 207  
Springfield, IL 62706

Dear Governor Quinn,

As required by 330 ILCS 45 (The Military Veterans Assistance Act) I am submitting the Veterans Assistance Commission of McHenry County Annual Report for the Fiscal Year ending November 30, 2010.

The normal functions of the VAC of McHenry County's office, includes but is not limited to the following areas:

- **Client Review:** Provide a complete review of every case for any additional programs or benefits to which the applicant may be entitled. This includes working closely with other agencies to ensure that clients receive the tools needed to become or remain independent.
- **Financial Assistance:** Provide assistance to indigent and/or needy veterans and their families using a voucher/direct payment system.
- **Transportation:** Through the operation of four vehicles the Commission provides free transportation services for veterans and their aide to the Capt. James Lovell Federal Health Care Center (Lovell FHCC). Over 2010 the VAC met 2,340 appointments for transportation to the VA Medical facilities. An increase of just over 2% from 2009.
- **The active pursuit of prosecuting claims on behalf of Veterans and/or their families before the U.S. Department of Veterans Affairs continues to be a priority.** Over 2009 McHenry County had a 17.99% increase in disability compensation of which this office accounted for 21.18% of that increase. The average increase throughout the State was 15.13%. The \$2,375,848.00 dollar increase in new claims dollars is not solely the result of the work done at the Veterans Assistance Commission of McHenry County, but also to the service officers at the Chicago VA Regional Office, North Chicago VA Medical Center, and the IDVA Representatives in North Chicago and Woodstock. A summary of the VA's 2009 workload report adjusted to show the impact of claims is included in Appendix D of this report. The 2010 figures will be published after February 2011.
- **Claims prosecuted by the VAC that were decided over 2010 resulted in \$797,425.00 in new claims reaching the pockets of McHenry County Veterans.** The combined impact of successful VA claims development and prosecution from 2007 through 2010 resulted in over \$2 million in VA Disability and Pension cash benefits in the pockets of McHenry County Veterans and their families over 2010.
- **Working with Local, State, and Federal officials and legislators to pass and/or support resolutions and legislation that positively impacts the veterans' community.**

Despite the economy and the high veteran unemployment rate in McHenry County, the VAC saw an 18% reduction in the number of families seeking assistance from the VAC over 2010. A number of factors can be credited for the decreased demand for Veterans Assistance including; the extension of unemployment benefits, moving after losing the home to foreclosure, employment, early retirement, or successful claims –

Veterans for Veterans; It's not just what we do, it's who we are

prosecution. Additionally, the VAC adopted a rules change which defined what is meant by “discharge that is Honorable” (330 ILCS 45 Sect. 2). The recommended definition was developed at a special meeting of the Illinois Association of County Veterans Assistance Commissions First Division. It was decided that a veteran with a “General Under Honorable Conditions” or similar discharge did not meet the minimum requirement for an “Honorable” discharge. This Appellate Court of Illinois, Second District came to a similar conclusion in *Boylan vs. the Illinois Student Assistance Commission* in April of 2010. Total financial assistance granted over 2010 was almost 41.5% lower than the total granted in 2009.

The VAC of McHenry County wishes to again thank the Illinois Department of Veterans Affairs for the grant dollars we received from the Illinois Veterans Lottery. Granted funds were used to provide restorative dental services and eye care to low income, uninsured veterans with a significant need.

The VAC VA Hospital Transportation Service runs fixed routes with pick-up and drop off points in McHenry, Crystal Lake, and Woodstock. Our veteran patients can choose an early bus (arrives at Lovell FHCC by 8:00 am and leaves by Noon) or a later bus (arrives by 10:00 am and leaves by 2:00 pm). This provides our veterans with access to specialty clinics. Thanks to assistance from the McHenry County Board, the VAC was able to enter into a vehicle lease agreement with Pace Suburban Bus. The VAC also applied for and received a transit grant to help fuel and maintain the new vehicle. VAC volunteers and Faith in Action provides transportation to and from the pick-up points for veterans who can’t drive. Volunteer drivers logged just under 34,000 miles over 2010. The VAC transported 2,340 appointments to the Lovell FHCC in North Chicago. Over 85% were over age 55.

The VAC has made our Veterans Outreach Program a priority. The VAC’s Outreach Veterans Service Officer meets with veterans and their surviving family members to provide financial assistance, referrals services, and assistance with the development and prosecution of VA Claims. Our Outreach VSO’s work with veterans at the Mercy Sage Cancer Treatment Center has become a model that other hospitals are requesting to duplicate. Our Outreach Education Program proactively reaches to veterans and their families through a variety of venues. This past year the VAC provided Educational Outreach at;

Regional Senior Services Mtg.	People in Need Forum	Family Services Senior Expo
Outdoor Expo with IDVA Rep	IDES Vets Employment Network	Woodstock Morning Rotary
Regional Stand-Down in Elgin	Leadership McHenry County	Services Fair – Shah Center
Skilled Care Facilities with IDVA Rep	The McHenry County Fair with AMVETS Post #269	The Veterans Forum at McHenry County College
The Hearthstone Senior Fair	IDES Veterans Job Fair	

The members of the Veterans Assistance Commission are proud to be serving our military veterans and their families. Working together with the U.S. Department of Veterans Affairs, local and state agencies, and local and state governments, McHenry County Veterans can expect quality service and assistance valuable to maintaining or reaching independence.

Very Respectfully,

Michael A. Iwanicki  
 Superintendent / CVSO

CC: Distribution List

## **What is the Veterans Assistance Commission?**

The Veterans Assistance Commission of McHenry County is a local government unit that is operated by and for the veterans of McHenry County. The Commission provides needed services and referrals to military veterans and their families, information services, financial assistance to eligible military veterans and their families who reside in McHenry County and qualify for and need assistance, and assist veterans and their family's complete VA forms for various benefits. The Commission, as a government agency, is backed and supported by a not-for-profit corporation, The McHenry County Veterans Assistance Commission, Inc. (501(19))

Local veterans' organizations in the county, in accordance with 55 ILCS 5/5-2006 and 330 ILCS 45/9, organized the Commission in the fall of 1989 and incorporated the ancillary organization in the spring of 1992. The Commission currently consists of one delegate and one alternate from each of 12 posts of the American Legion; 5 posts of the Veterans of Foreign Wars; 2 posts of the AMVETS; and 1 post each of the Marine Corps League, Polish Legion of American Veterans, and VietNow. The Commission is a member of the National Association of County Veteran Service Officers, the Illinois Association of County Veteran Assistance Commissions, and the McHenry County Continuum of Care.

Veterans Assistance Commission Financial Assistance is assistance made available, exclusively, to Honorably Discharged Military Veterans and their families who have a discernible financial need as determined by written standards.

The Commission provides Emergency Veterans Assistance (EVA) for Utilities or Shelter, Disaster Veterans Assistance (DVA) for Housing, and regular Veterans Assistance. EVA is a onetime assistance for eligible families who, due to no fault of their own, fell behind on housing or utilities. EVA is not granted when a family is eligible for Veterans Assistance. DVA is a onetime housing assistance granted to eligible families who, due to no fault of their own, lost housing due to a natural or manmade disaster which made their home unlivable. Veterans Assistance is granted to eligible low income applicants and may be used for:

Food	Utilities	Shelter
Transportation	Medical Aid	Independent Living

Commission employees often intercede on behalf of our clientele with utility companies to keep services from being shut off; landlords to prevent evictions; and the VA to receive benefits. The VAC is seen by most veterans as the first place to go for assistance and information. By working closely with other agencies, clients are being exposed to a family of service that is successfully lessening the impact of most problems faced by our clients and their families. It is the goal of the VAC to help our clients to maintain or reach a position of functional independence.

The Commission works closely with the United States Department of Veterans Affairs, the Illinois Department of Veterans Affairs, the Illinois Department of Human Services, Illinois Workforce - VETS, the McHenry County Housing Authority, Consumer Credit Counseling Services, Transitional Living Services, Township Supervisors, PADS, and a myriad of private and public social service organizations. The following briefly highlight's some of the relationships the VAC has with other agencies.

### United States Department of Veterans Affairs (USDVA)

The USDVA is divided into three distinct organizations that deal directly with veterans or their families; the Veterans Benefits Administration (VBA), the Veterans Health Administration (VHA), and the National Cemetery Administration (NCA).

The VAC provides transportation for veterans to the Capt. James A. Lovell Federal Health Care Center Lovell (FHCC), and assists veterans with enrolling for treatment with the VHA. VAC Transportation Service Providers are available to help patients resolve problems with medical appointments and communicating concerns to hospital staff.

Most benefits provided on behalf of a deceased veteran are now handled at the funeral home. On occasion the family is unable to locate necessary information needed to get VA burial benefits. The VAC assists with locating and identifying needed documentation on behalf of the veteran. The VAC also assists the family in filling out the VA forms needed for some of the burial benefits.

The Veterans Benefits Administration (VBA) of the VA is primarily concerned with veteran's benefits in the areas of disability compensation, pension, insurance benefits, or other financial benefit programs. This may be perceived as a rather confusing environment. If the veteran represents himself/herself in the filing of claims, which is his or her right, quite often the benefit received is much less than actually deserved. It is in the veteran's best interest to apply for these benefits using an accredited veteran service officer. VAC Service Officers (VSO's) are Accredited Service Organization Rep's to the VA for NACVSO, AMVETS, DAV, the Retired Enlisted Association and the American Legion. We have the ability to expedite the acquisition of supporting documentation from local medical professionals and are available to guide and counsel the veteran in face to face meetings. As a result of a more informed and a growing veteran's population in McHenry County, the VAC has been assisting a greater number of veterans with their claims. Over 2010, our office helped clients develop and prosecute claims that accounted for \$797,425.00 of new VA compensation and pension dollars that came to the county. Thanks to VA claims work done by the VAC from 2007 through 2010, over \$2 Million was received by McHenry County Vets and Dependents over 2010.

### Illinois Department of Veterans Affairs

The VAC has a strong relationship with the IDVA. Over 2010 the VAC Superintendent and the IDVA County VSO's have worked together to inform elderly veterans and their families of benefits for which they may be eligible. Additionally, the VAC and IDVA have worked together to staff a booth at local fairs, expo's, and other events to provide outreach education. Thanks to an Illinois Veterans Lottery Grant from the IDVA the VAC was able to provide eye care to low income veterans in McHenry County.

### McHenry County Community Foundation

This summer the VAC received an anonymous donation through the MCCF to take some veterans to a Kane County Cougars ball game and picnic lunch. Nineteen local low income veterans enjoyed watching the Cougars stomp the Burlington Bee's!

### Illinois Department of Employment Security

The IDES –VETS section works very closely with the VAC. Veterans Assistance clients who are eligible to work are required to work with the IDES representatives. The Veterans Employment Representative from IDES also organized a Veterans networking program that meets twice a month to share employment opportunities, practice interview skills, and share employment tips. McHenry County IDES is also organizing Veterans Employment Fairs. The VAC provides veterans benefit information to those participating in the fair.

### McHenry County Government

The Veterans Assistance Commission routinely works with the McHenry County Board and other county officials to meet the needs of our local community. County Departments routinely assist the VAC with common administrative functions which frees our staff to spend more time on veteran's issues.

### Township Supervisors General Assistance

Township Supervisors have been very good about ensuring veterans get an appointment with the VAC. In most cases, the VAC had been able to provide assistance to qualified veterans freeing up Township General Assistance monies for other needy families. We will be looking to work closer with the more populated townships as a part of our Outreach program.

### McHenry County Housing Authority

MCHA and the VAC have a good working relationship and provide referrals to each other. During the months of October thru May we normally refer clients to MCHA for assistance with utilities utilizing the Low Income Home Energy Assistance Program (LIHEAP). The MCHA assisted the VAC with receiving an ARRA grant to help provide more outreach services to our veterans community. Also, the MCHA is providing administrative support for the Veterans Affairs Supportive Housing Vouchers (VASH). Both MCHA and the VAC have referred homeless and at risk for homelessness veterans to the VASH program.

### Faith In Action

The VAC partnered with Faith in Action, a volunteer based organization that assists senior citizens. Faith in Action transports many of our clients to and from the VAC's VA Hospital Transportation Service pick-up points. Over 2010 Faith in Action volunteers logged over 22,000 miles.

The VAC volunteers also transport some of our veterans and have logged over 11,000 miles.

### Sage Cancer Center

The Sage Cancer Center proactively informs veteran patients of possible benefits that may be available. The Sage Center then notifies the VAC if a patient is interested in benefits information. The VAC's Outreach Program is able to work with patients and their families on site. The positive impact this has had on our veteran patients has resulted in an interest from other hospitals in the area for our outreach.

## Financial Assistance

The Commission, in accordance with the Military Veterans Assistance Act, provides financial assistance to indigent and needy veterans and their families. We have provided the following funding to needy veterans and their families in McHenry County:

2009 Total	Food	Housing	Utilities	Travel	Medical	Indp. Living
\$256,177.86	\$22,823.94	\$139,206.29	\$51,860.70	\$1,377.00	\$ 428.65	\$40,481.28

2010 Total*	Food	Housing	Utilities	Travel	Medical	Indp. Living
\$149,907.78	\$7,725.00	\$ 90,586.77	\$29,226.19	\$1,862.50	\$ 1,148.00	\$19,359.32

%Change	Food	Housing	Utilities	Travel	Medical	Indp. Living
-41.48%	-66.15%	-34.93%	-43.64%	+35.26%	+167.82%	-52.18%

\* The Figures above our based on reports from Virtual Veteran. Over 2010 a difference of \$3,202.20 exists between the two accounting programs (The Auditors 'Performance Series' and the VAC's 'Virtual Veteran') due to end of year expenses for 2009. Virtual Veteran does not permit back dating to a previous fiscal year. \$16.99 was added to 2010 Medical from the 'Other' category.

### Food

All food purchases were made by gift card to either; Wisted's Grocery in Marengo, Huntley, or Woodstock, or Aldi Foods. The gift cards are marked to prevent the purchase of tobacco or alcohol products. The VAC switched to gift cards because it draws less attention to the recipient using the card as compared to the voucher, it is easier for our vendors to administer, and it is easier for the VAC to administer.

Referrals are routinely made to local food pantries and the Illinois Department of Human Services for food assistance. Additionally, referrals were made to the Transitional Living Services (TLS) in Hebron who was providing meat boxes on a bi-monthly basis to needy veterans in McHenry County. The following organizations provided local low income veterans and their widows with holiday food baskets:

VietNow                      AMVETS Post #269                      The Veterans Network  
 The Polish Legion    The Knights of Columbus    Christmas Clearing House

### Housing

Rental or mortgage payments are made by check directly to the landlord or bank. The address must be verified as being a residence in McHenry County for which the applicant has legal control by means of lease or mortgage. The bulk of Veterans Assistance went to sheltering veterans and/or their families (60.43% of total assistance granted). The housing assistance total included both Veterans Assistance and Emergency Veterans Assistance.

### Utilities

Utilities that are in the veterans or spouses name are made by check directly to the vendor. The VAC will cover bills submitted by the applicant for payment of Electric, Gas and Heating Oil, Water and Sewer, Garbage pickup, and the basic charge for one household telephone.

Over half of the families eligible for assistance from the VAC were also able to get energy assistance from LIHEAP. High unemployment resulted in a tremendous demand for utility assistance. Also, families whose homes were in foreclosure tended to pay utilities only.

**Travel**

Travel assistance is provided for those clients who are looking for work and/or require their automobiles for medical needs. The VAC issues vouchers made out to the Woodstock Mobil Service Station for those clients who documented their travel to doctors and/or employment opportunities. Beginning January 2010 the VAC started providing Pace Bus Passes to the Veterans Employment Rep with IDES. This helps those vets looking for work to receive transportation assistance without having to go to multiple offices. Assistance for auto repairs is done only if an estimate of service is provided prior to repairs being done. The veteran must prepay the difference for auto repairs exceeding the available assistance level.

**Medical**

Medical assistance is not typically provided by the VAC. The figure above illustrates medical assistance granted as Veterans Assistance. Medical Assistance is covered under a different line item and is typically funded through grants. Over 2010 the VAC provided over \$41,000 for Eye Care and Dental Care. The assistance was available thanks to IDVA Veterans Lottery Grants, and \$20,000 from the VAC budget. The Veterans Restorative Dental Program is a partnership between the VAC and the McHenry County Dental Society. The VAC partnered with Wal-Mart to provide eye exams and glasses to low income veterans in need of eye care.

**Independent Living**

In addition to transitional centers, halfway houses, and assisted living facilities, the VAC can help fund services that assist veterans so they can remain at home or become more independent. Such services would include financial counseling (provided by Consumer Credit Counseling Service), and in home assistance.

**Total Assistance Breakdown**

The following table is a complete breakdown of the VAC Budget as categorized in the Virtual Veteran Program. The following categories represent Veterans Financial Assistance:

<b>Food</b>	<b>Housing</b> Mortgage      Rent	<b>Independent Living</b>
<b>Medical</b>	<b>Transportation</b> Bus Ticket      Gasoline Cab              Train	<b>Utilities</b> Electric          Gas Heat Propane          Sewer Fuel Oil          Water Telephone        Trash

## Transportation Service

The Veterans Assistance Commission has been providing free transportation services for veterans to the Captain James A. Lovell Federal Health Care Center (Lovell FHCC) since 1990. We maintain a 13 passenger and an 11 passenger minibus, an 8 passenger high-top van, and two 4 passenger handicap access minivans. The Commission employs 5 per diem Transportation Service Providers, (TSP). Our veterans can choose to be picked up from one of four centralized pick up points; Burger King in Crystal Lake, the VFW and Green Street Parking in McHenry, and the Train Station in Woodstock. The VAC's Lovell FHCC Transportation Service helps our veterans make appointment times between 8:00am – 2:00pm. The morning bus arrives at Lovell FHCC by 8:00am and departs by Noon while the later bus arrives at 10:00am and departs by 2:00pm.

Thanks to the help of the McHenry County Board, the VAC was able to replace its aged 2000 minivan with a new 13 passenger Pace Mini Bus. The Pace lease program required \$1,000.00 and \$100.00 per month. Our veterans very much like the ride of the vehicle, and we have plans to replace our 2003 mini bus with another Pace lease. Additionally, the VAC will likely change the purpose of the high-top van to a mobile office sometime over 2011.

All staff members are required to maintain an up-to-date certification in Defensive Driving, Basic First Aid, and Cardiopulmonary Resuscitation. Additionally, all TSP's and Safety Sensitive office staff are required to pass a DOT physical and are subject to random drug and alcohol screening. In addition to providing transportation service the TSP's intervene on behalf of patients addressing concerns at the VA Hospital and assisting with setting up appointments. They also maintain contact with many of our older veterans who live alone.

The VAC continues to partner with Faith in Action. Volunteers from Faith in Action have been assisting some of our clients who are unable to get to the pick-up points on their own. Over 2010 Faith in Action volunteers logged over 22,000 miles assisting our veterans. Faith in Action and the VAC are in the second year of a transit grant which helps Faith in Action meet the increased demand for their services, and helps the VAC with fuel and maintenance for the Pace bus.

The VAC also has volunteers who assist clients who can't get to pick up points on their own. VAC Volunteers were responsible for another 11,000+ miles in volunteer service to our local veterans.

The following table gives a breakdown of passengers carried for the past three Fiscal Years. There was a 2.1% increase in ridership in 2010 compared to 2009 (2,340 passenger round trips). This was likely due to the recession and the increased services available at the Captain James A. Lovell Federal Health Care Center. The total cost of transportation was just over \$76,000 or \$32.57 per round trip passenger.

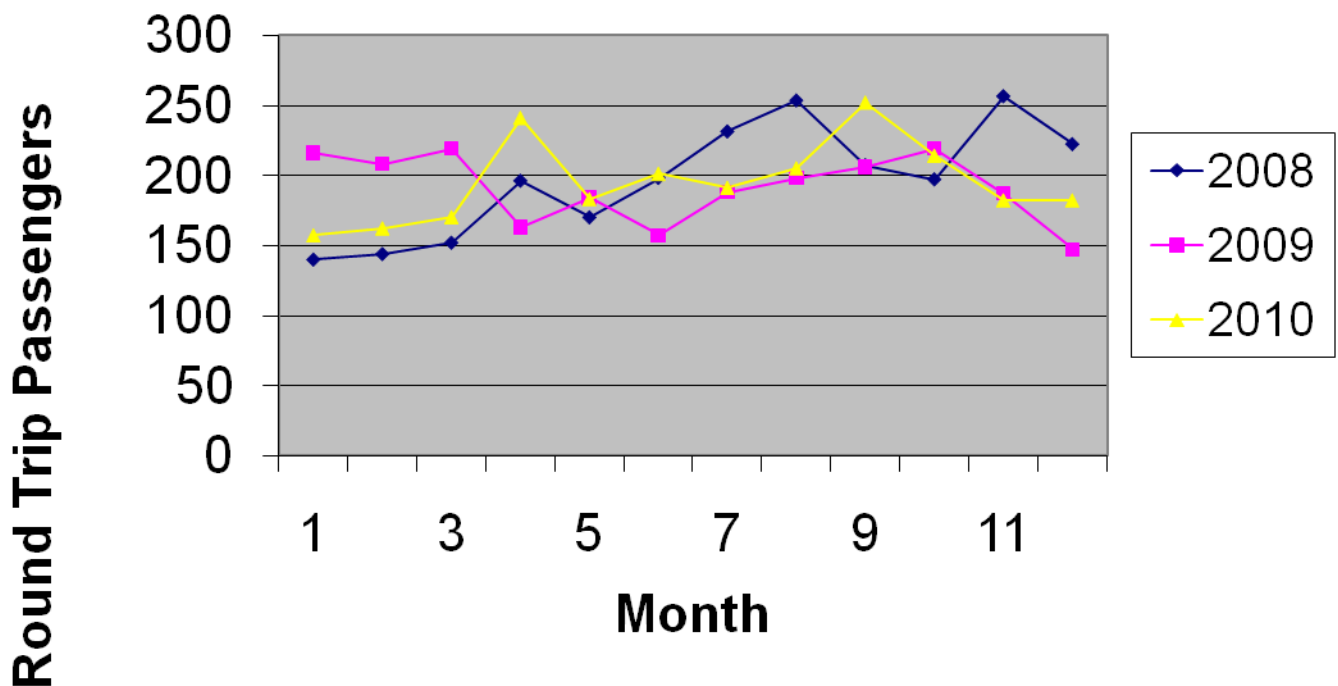


Beginning December 1, 2010 the VAC will be counting each trip as “One Way Trips”. This change in reporting is to standardize our reporting so it matches what we send to Pace and the Transit Committee.

The figure under Percent Capacity is a measure of the number of veterans filling seats over the fiscal year. The goal is to not exceed 70% capacity at which point we would be in need of replacing a smaller vehicle with a larger vehicle. Over 2010 that figure dropped significantly as a result of replacing a 4 passenger vehicle with a 13 passenger vehicle.

Month	2008	2009	%Change 2008	Ave. % Change	2010	%Change 2009	Ave. % Change
December	140	216	54.3%	54.3%	157	-27.3%	-27.3%
January	144	208	44.4%	49.3%	162	-22.1%	-24.8%
February	152	219	44.1%	47.5%	170	-22.4%	-24.0%
March	196	163	-16.8%	27.5%	241	47.9%	-9.4%
April	170	184	8.2%	23.4%	183	-0.5%	-7.8%
May	198	157	-20.7%	14.7%	201	28.0%	-2.9%
June	231	188	-18.6%	8.4%	191	1.6%	-2.2%
July	253	198	-21.7%	3.3%	205	3.5%	-1.5%
August	207	206	-0.5%	2.8%	252	22.3%	1.3%
September	197	219	11.2%	3.7%	214	-2.3%	0.9%
October	256	187	-27.0%	0.0%	182	-2.7%	0.6%
November	222	147	-33.8%	-3.1%	182	23.8%	2.1%
Passengers	<b>2366</b>	<b>2292</b>			<b>2340</b>		
Equal Time	<b>2366</b>	<b>2292</b>			<b>2340</b>		
Percent Capacity	<b>68.6%</b>	<b>60.4%</b>	Goal <70%		<b>45.6%</b>		
Percent Change		<b>-11.94%</b>			<b>-24.51%</b>		

## Passenger Load



## 2010 Highlights

### *Goals Met:*

- Over 2010, VAC Accredited Service Officers successfully developed and prosecuted veterans VA Compensation and Pension claims that resulted in \$797,425.00 in new claims dollars actually in the pockets of McHenry County veterans. Our goal for 2010 was \$500,000. Additionally, the impact of successful claims development and prosecution from 2007 – 2010 resulted in \$2,016,341 in the hands of veterans and their dependents over 2010.
- Looking to develop a better understanding of how other social service programs operate, VAC staff participated in training conducted by federal, state, and local programs. Training was offered by; The Social Security Administration, The Illinois Department of Human Services, Transitional Living Services (PTSD and Mental Health issues), Timothy J Hayes Psy. D. (alternative psychology techniques), and Senior Services for the Veterans Independence Program. The training broadened the VAC's knowledge of programs that can assist our local veterans.
- Our Veterans Service Officer Trainee had successfully completed phases I and II of the VAC's Accredited VSO Training Program. The VAC's Trainee may now present and prosecute veteran's claims as a Service Organization Representative for: Disabled American Veterans, National Association of County Veterans Service Officers, and The Retired Enlisted Association.
- The primary goal of the VAC's Outreach Program is to provide access to veterans and their dependents that, due to disability or work schedule, are unable to meet with a VSO during office hours. We have a dedicated Outreach VSO who meets with clients. Outreach clients resulted in just over \$250,000 in new claims or about 31.4% of claims decided in 2010.
- The VAC is working with the Illinois Department of Human Services to share information in order to better serve our veteran clients.

### *Challenges Addressed:*

- Over 2010, the VAC had seen a significant increase in the demand for outreach services. In order to keep up with the growing demand we have increased the hours of our Outreach VSO from 1,000 hours annually to 1,350 annually (effective for FY 2011). The VAC is also looking into converting a high top van into an "Office on Wheels".
- With unemployment benefits being extended through FY 2010 eligibility for Veterans Assistance was less than anticipated (down 48%). However, with a cap of 99 weeks of total unemployment benefits we do anticipate seeing an increase over 2011.
- The VAC started the process of posting Commission agendas and meeting minutes on our website. Additionally, the office has introduced sending monthly meeting information via e-mail.

### *In addition to goals that were met:*

- The VAC's Outreach Program also includes educational outreach. Teaming up with AMVETS Post 269, the VAC was able to provide Outreach Education at the McHenry County Fair. Working with the IDVA County Veterans Service Officer, the VAC provided Outreach Education at; local nursing homes and the Great Outdoors Expo. Additionally the VAC manned an information booth at; Senior Services, the Senior Fair, the People in Need Forum, The McHenry County IDES Job Fair, and the Veterans Forum. The VAC provided speakers at the Senior Fair and the Veterans Forum.
- McHenry County had a 17.99% percentage increase in VA compensation and pension dollars over 2009. The State average increase was 15.37%.

- The Commission identified \$20,000 that could be used for the Veterans Restorative Dental Program. It was used to assist five veterans who were in need of dental restoration services.
- The VAC partnered with Wal-Mart Eye Care to provide needy veterans with eye exams and eye glasses. The program was funded thanks to a grant from the Illinois Veterans Lottery Grant Program.
- The VAC received an anonymous grant to take lower income veterans to a picnic followed by a Kane County Cougars game. Our veterans enjoyed the picnic at Fabyan Forest Preserve and then went to watch the Cougars clobber the Bee's!
- All VAC personnel were able to recertify in First Aid, CPR, and AED. This was thanks to the McHenry County Sheriff's Department who offered the class.
- Thanks to the Veteran Network Committee, four local WWII veterans were able to participate in Honor Flight. Honor Flight transports veterans at no charge to see the WWII memorial. The VAC provided transportation to the airport and back.
- Over Thanksgiving and Christmas, the VAC helped AMVETS Post 269, The Polish Legion 188, VietNow, The Knights of Columbus, and Christmas Clearing House identify veterans and their families who could benefit from a holiday box.
- Partnering with Faith In Action, the VAC applied for and received a transit grant which is being used for fuel and maintenance of the Pace Bus.
- Our Outreach Program has developed a close relationship with staff at the Sage Cancer Treatment Center. Staff at the Sage Center asks patients if he/she is a veteran. If so, the veteran is encouraged to meet with our Outreach VSO. This arrangement has been so successful that other hospitals are interested in creating similar programs.

#### *2010 Goals not met:*

- The VAC had fallen well short of our goal of collecting \$5,000 in SSI Reimbursements.
- The Illinois Department on Aging has coordinated with McHenry County Senior Services to provide the Veterans Independence Program (VIP). This pilot program is designed to provide financial assistance to elderly veterans for in-home assistance. The program goal is to help the veterans stay in his/her home rather than going to a skilled care facility. Since McHenry County was included in the pilot area the VAC dropped plans to develop an in-home veterans assisted living program
- We continue to work toward having a program that can meet veterans at local townships or post homes instead of the VAC Office. The VAC is looking at converting a high top van into a mobile office to better address this goal.

#### **Goals for 2011**

- Exceed \$1,000,000 in new claims dollars into the hands of McHenry County's disabled veterans.
- Coordinate with Township Supervisors to provide outreach services at the local townships.
- Service Officer Trainee to complete phase III of VAC Service Officer Training.
- Identify and take advantage of training programs offered by other service agencies so VAC staff can better understand requirements for other services offered by other local agencies.
- Explore grant opportunities to assist the family of a veteran who is being treated for a life threatening illness as a result of his/her military service.
- Continue to expand agency agreements to better serve the McHenry County veterans community.

## **Challenges for 2011**

### *Financial Assistance:*

- Unemployment is expected to remain high and with uncertainty in the economy the VAC anticipates greater demand for financial assistance, especially from new clients who have exhausted other financial options (the maximum unemployment benefit is 99 weeks). At the same time the VAC is drawing down reserve funds to meet this challenge due to reduced tax revenue.

### *VA Claims:*

- There continues to be growing demand to provide outreach services for disabled veterans, and vets who can't afford to take time off work to meet with a VSO. To meet this demand, outreach hours were increased by 35%. However, it is anticipated that our other 2 VSO's will need to increase their participation in the Outreach Program.
- The VAC is examining the possibility of converting a High-Top van into a mobile 'field office' from which the VAC and invited agencies can provide service. Should the renovation be approved necessary equipment will have to be tested to ensure compatibility with the County's remote access.

### *VAC Website*

- As more of our veterans rely on electronic means to gain information about benefits, the VAC needs to make changes in order to keep our local veterans informed. The VAC would benefit from changes such as:
  - A less complicated web address
  - Brief tutorials on specific benefits
  - Answers to FAQ's

## **Beyond 2011**

- With 2½ Accredited Service Officers filing claims on behalf of our local veterans it is anticipated that the VAC will exceed \$1,250,000 in new claims dollars coming into McHenry County Veterans annually.
- The VAC Veterans Service Officers would like to have monthly visits to the VA Regional Office so we can familiarize ourselves with the process and get updates for some of our clients.
- With the 9<sup>th</sup> largest concentration of veterans in the State, McHenry County veteran's rank 14<sup>th</sup> in percentage of Compensation and Pension received from the VA. With 2½ Accredited Service Officers the VAC expects McHenry County to rank in the top 10 within 2 years.
- Services from the VAC to the veterans' community will continue to adapt to McHenry County's growing veterans population and their changing needs.
- Hire a second part time Outreach Veterans Service Officer to meet the growing demand for in home service visits.

## **Appendices**

**Appendix A**  
**Officers, Committee Members, and Staff**

**Elected Officers / Executive Board**

Chairman Joe Kersten, Woodstock  
Senior Vice Chairman Ted Andersen, Woodstock  
Junior Vice Chairman Open  
Treasurer Gerald Raske, Wonder Lake  
Judge Advocate Ray Rigsby, McHenry  
Sergeant-at-Arms James Koch, McHenry

**Appointed Officers**

Secretary Mike Wisniewski, McHenry  
Parliamentarian Ray Rigsby, McHenry  
Chaplain Roger Lasko, McHenry

**Board of Appeals**

Chairman Joe Kersten, Woodstock  
World War II Era, Kenneth Kraft, Hebron  
Korean War Era, Jerry Raske, Wonder Lake  
Vietnam Era, Eugene Boxleitner, Marengo  
Gulf War Era, Mike Wisniewski, McHenry  
Member at Large, Open  
McHenry County Board Chairman's Representative, Ed Dvorak Crystal Lake

**Staff**

Superintendent Michael Iwanicki, Wonder Lake  
Veterans Service Officer - Outreach, Cheryl Kirsch, Crystal Lake  
Veterans Service Officer – Trainee, Jane Dorfner, Wonder Lake  
Administrative Specialist James Koch, McHenry  
Per Diem Transportation Service Provider David Ayers, Cary  
Per Diem Transportation Service Provider Ron Nickels, Woodstock  
Per Diem Transportation Service Provider Tony Handzel, McHenry  
Per Diem Transportation Service Provider Roy Allsup, McHenry  
Per Diem Transportation Service Provider Jack Reasinger, McHenry

## **Appendix B**

### **Commission Members**

#### **The American Legion**

Post 119, Fox River Grove  
Delegate: Randy Granath  
Alternate: Vacant

Post 171, Crystal Lake  
Delegate: Floyd Miras  
Alternate: "Buck" Pearson

Post 192, Marengo  
Delegate: Gene Boxleitner  
Alternate: Vacant

Post 253, Richmond  
Delegate: Bob Howe  
Alternate: Jay Baker

Post 265, Harvard  
Delegate: Ed Haldeman  
Alternate: Don Barrett

Post 276, Cary  
Delegate: Neal Donner  
Alternate: Elroy Fitzgerald

Post 412, Woodstock  
Delegate: Dwayne Rainey  
Alternate: Vacant

Post 482, Union  
Delegate: Lyle Krause  
Alternate: Vacant

Post 491, McHenry  
Delegate: Roger Lasko  
Alternate: Jerry Raske

Post 606, Hebron  
Delegate: Art Erickson  
Alternate: Ken Kraft

Post 673, Huntley  
Delegate: Loralee Stump  
Alternate: Gail Weir

Post 1231, Lake in the Hills  
Delegate: Jeff Jenkins  
Alternate: Open

#### **Vietnow**

McHenry County Chapter  
Delegate: Tony Bilus  
Alternate: Joseph Kersten

#### **AMVETS**

Post 245, Cary  
Delegate: Robert DePaul  
Alternate: Vacant

Post 269, Woodstock  
Delegate: Donald Stage  
Alternate: Ted Andersen

#### **Marine Corps League**

McHenry County Detachment  
Delegate: Gerald Haven  
Alternate: Herb Zabroski

#### **Polish Legion of American Veterans**

Post 188, McHenry  
Delegate: Roy Allsup  
Alternate: James Koch

#### **Veterans of Foreign Wars of the U.S.**

Post 4600, McHenry  
Delegate: Ralph Diedrich  
Alternate: Ray Rigsby

Post 5040, Woodstock  
Delegate: Brian Ritter  
Alternate: Robert James

Post 8249, Harvard  
Delegate: Tom Ensign  
Alternate: Rex Ritter

Post 11496, Johnsburg  
Delegate: Steve Fike  
Alternate: Open

Post 12014, Crystal Lake  
Delegate: Vacant  
Alternate: Vacant

## Appendix C Distribution List

Ken Koehler	Chairman	McHenry County Board
Kurt Daesch	Secretary	Illinois Association of County VAC's
Ed Dvorak	County Board Rep	McHenry County Board
Lynn Orphal	Chairman	Public Health & Human Services Committee (+6)
	Supervisors	McHenry County Townships (17)
	State Senator	U.S. and State Representatives (5)

### Veterans Assistance Commission of McHenry County

Joe Kersten	Chairman
Ted Andersen	Sr. Vice Chairman
Open	Jr. Vice Chairman
Gerald Raske	Treasurer
Ray Rigsby	Judge Advocate
James Koch	Sergeant at Arms
Roger Lasko	Chaplain
Michael Wisniewski	Secretary

### Veterans Service Organization's

#### American Legion

Commander	Post 119	Fox River Grove
Commander	Post 171	Crystal Lake
Commander	Post 192	Marengo
Commander	Post 253	Richmond
Commander	Post 265	Harvard
Commander	Post 276	Cary
Commander	Post 412	Woodstock
Commander	Post 482	Union
Commander	Post 491	McHenry
Commander	Post 606	Hebron
Commander	Post 673	Huntley
Commander	Post 1231	Lake in the Hills
Commander	County Council	Marengo

#### AMVETS

Commander	Post 245	Cary
Commander	Post 269	Woodstock

#### The Marine Corps League

Commandant	McHenry County Detachment	Woodstock
------------	---------------------------	-----------

#### Polish Legion of American Veterans

Commander	Post 188	McHenry
-----------	----------	---------

#### Veterans of Foreign Wars

Commander	Post 4600	McHenry
Commander	Post 5040	Woodstock
Commander	Post 8249	Harvard
Commander	Post 11496	Johnsburg
Commander	Post 12014	Crystal Lake

#### Vietnow

President	McHenry County	McHenry
-----------	----------------	---------

Four (4) File Copies

## Appendix D Tables & Graphs

### Financial Assistance Overall

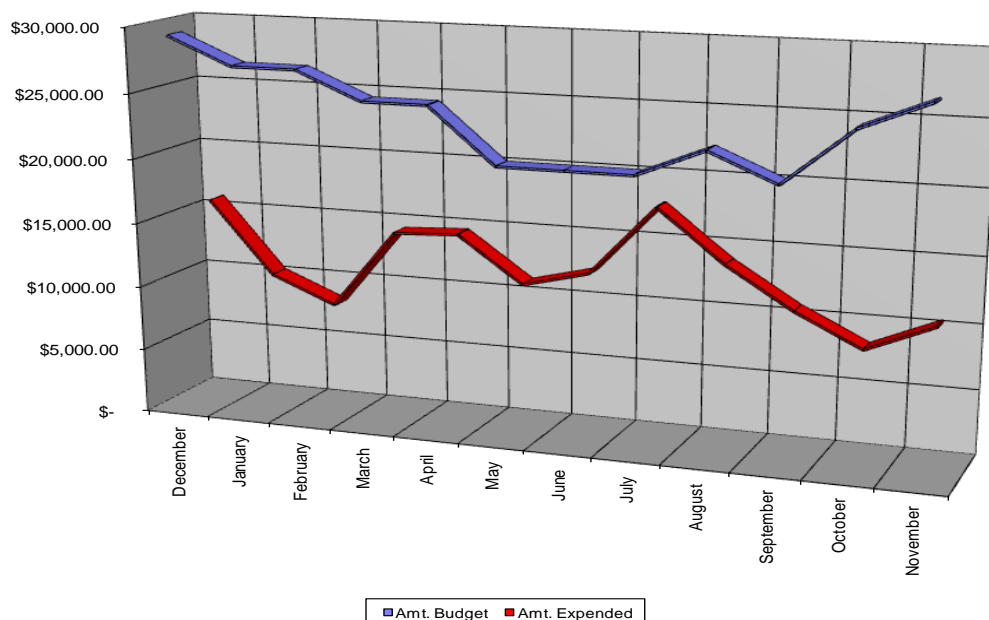
The following Tables and Graphs provide an overall picture of the Financial Assistance we provided to veterans and their families this past year. The VAC uses the Health and Human Services Poverty Level Guidelines (PLG) to establish an eligibility guideline. Pay out levels and income caps are determined each year after the Guidelines are published (usually in late February). The Commission uses 135% of the PLG for Veterans Assistance. Emergency Veterans Assistance (EVA) for Housing & Utilities has a separate set of guidelines.

We had 1,564 requests for financial assistance over 2010. Total financial assistance provided was \$146,705.58 (per Auditor) broken down between Groceries, Rent and Mortgage Payments, Utility Bills, Transportation Expenses (excluding the Transportation Services Program), Medical Payments (other than dental or eye care), Independent Living Fees, and Emergency Veterans Assistance. This figure represents a -41.48% change in assistance granted over 2009, and was about half what was projected.

Requests for assistance were 18% less than what was seen over 2009. A majority of the Veterans Assistance and EVA requests that were not granted was because the family was over income... often well over income. Many families went from two incomes to one or none. The VAC interviewed a lot of applicants where the family's two wage earners were both receiving Unemployment benefits. Many older wage earners accepted early retirement and only needed Veterans Assistance while their retirement paperwork was pending. The VAC also worked with veterans and surviving spouses to secure VA financial benefits (Disability, Pension, and DIC).

The VAC provided referrals to various agencies including; Consumer Credit Counseling Services, Illinois Workforce – VETS Section, McHenry County Housing Authority, and the Illinois Department of Human Services. Coordinating efforts helped eligible applicants recover financially in a shorter period of time.

2010 Monthly Veterans Assistance



Appendix D  
Tables & Graphs

**Financial Summary For Fiscal Year 2010**

The difference between the Total Requested and the Total Assisted is related to fuel vouchers not being completely used and assistance granted and not used by the veteran. Figures are also available for expenses related to the VAC Transportation Service and VAC Office Expenses. There is a \$12,968.54 difference between the McHenry County Auditor and Virtual Veteran Accounting (the Auditors figure is lower). This appears to be caused by a difference between how the Auditors system and Virtual Veteran account for year-end expenses in 2009 and 2010. Additionally, a \$4,300 grant for VAC Outreach was administered by the Grantor and recorded on Virtual Veteran. The County Auditor accounted for the grant separate from the VAC's Budget.

VAC Bus Service represents the total cost of providing transportation service to the Capt. James Lovell Federal Health Care Center less transportation by Cab. The figure includes driver payroll, vehicle fuel and maintenance, training, and vehicle costs.

VAC Office represents the total cost for; Veterans Outreach, Administration of Veterans Assistance, Administration of the Transportation Program, and costs associated with VA Claims development and prosecution. The total includes; office payroll, training, office supplies, and office equipment.

**Print Date: 12/28/2010**

**Assistance Summary  
12/1/2009 Thru 11/30/2010**

**Page N**

<b>Total Requested:</b>	<b>\$457491.44</b>
<b>Total Assisted:</b>	<b>\$456719.06</b>

Financial Aid Type	Total Entries	Requested	Assisted
Dental	14	\$31846.14	\$31846.14
Eyeglasses	16	\$11132.98	\$11132.98
Food	646	\$7725.00	\$7725.00
Gasoline	20	\$695.62	\$620.00
Housing Mortgage	51	\$25248.23	\$24551.47
Housing Rent	154	\$66035.30	\$66035.30
Independent Living	93	\$19359.32	\$19359.32
Medical	3	\$1132.00	\$1132.00
Other	1	\$16.00	\$16.00
Reimbursement of Financial Assistance	8	\$-46.53	\$-46.53
Transportation Bus Ticket	21	\$1242.50	\$1242.50
Transportation Cab	40	\$2025.00	\$2025.00
Transportation Train	0	\$0.00	\$0.00
Utilities Electric	76	\$13514.64	\$13514.64
Utilities Gas	59	\$11970.23	\$11970.23
Utilities Propane or Fuel Oil	1	\$73.80	\$73.80
Utilities Sewer	1	\$206.94	\$206.94
Utilities Telephone	6	\$334.86	\$334.86
Utilities Trash	16	\$1194.19	\$1194.19
Utilities Water	21	\$1931.53	\$1931.53
VAC Bus Service	246	\$75634.36	\$75634.36
VAC Office	288	\$186170.71	\$186170.71

## Appendix D Tables & Graphs

The following spreadsheet matches the McHenry County Auditor's information.

<b>Personnel</b>						
<b>Line No.</b>	<b>Line Item</b>	<b>Budgeted</b>	<b>Expended</b>	<b>Remaining</b>	<b>% Exp.</b>	<b>% Rem.</b>
3010	Salaries	\$ 112,811.00	\$ 107,862.82	\$ 4,948.18	95.6%	4.4%
3020	Part Time	\$ 18,514.00	\$ 20,282.77	\$ (1,768.77)	109.6%	-9.6%
3030	Per Diem	\$ 56,996.00	\$ 48,590.85	\$ 8,405.15	85.3%	14.7%
3050	Merit Pool	\$ 2,604.00	\$ -	\$ 2,604.00	0.0%	100.0%
3100	Uniform All.	\$ 350.00	\$ 319.00	\$ 31.00	91.1%	8.9%
3105	SS/Co. Share	\$ 14,607.00	\$ 13,227.86	\$ 1,379.14	90.6%	9.4%
3110	IMRF	\$ 11,692.00	\$ 10,808.09	\$ 883.91	92.4%	7.6%
3146	Hlth. Ins.	\$ 23,116.00	\$ 20,447.08	\$ 2,668.92	88.5%	11.5%
<b>Personnel</b>		<b>\$ 240,690.00</b>	<b>\$ 221,538.47</b>	<b>\$ 19,151.53</b>	<b>92.04%</b>	<b>7.96%</b>
<b>Contractural &amp; Assistance</b>		<b>Budgeted</b>	<b>Expended</b>	<b>Remaining</b>	<b>% Exp.</b>	<b>% Rem.</b>
4001	Contract Service	\$ 2,400.00	\$ 9,411.89	\$ (7,011.89)	392.2%	-292.2%
4005	Dues/Mbrshps	\$ 400.00	\$ 430.00	\$ (30.00)	107.5%	-7.5%
4006	Training	\$ 1,400.00	\$ 1,424.95	\$ (24.95)	101.8%	-1.8%
4008	Subscriptions	\$ 200.00	\$ 160.68	\$ 39.32	80.3%	19.7%
4055	Contract Printing	\$ 600.00	\$ 753.70	\$ (153.70)	125.6%	-25.6%
4060	Legal Note/Adv.	\$ 1,800.00	\$ 54.49	\$ 1,745.51	3.0%	97.0%
4096	Telecomm.	\$ 4,000.00	\$ 2,581.01	\$ 1,418.99	64.5%	35.5%
4200	Vets Assist	\$ 293,022.00	\$ 146,705.58	\$ 146,316.42	50.1%	49.9%
4246	Medical Service	\$ 35,000.00	\$ 41,294.12	\$ (6,294.12)	118.0%	-18.0%
4306	Vehicle Maint.	\$ 7,500.00	\$ 2,670.57	\$ 4,829.43	35.6%	64.4%
4321	VIMS Maint	\$ 750.00	\$ 633.00	\$ 117.00	84.4%	15.6%
<b>Contractural</b>		<b>\$ 347,072.00</b>	<b>\$ 206,119.99</b>	<b>\$ 140,952.01</b>	<b>59.39%</b>	<b>40.61%</b>
<b>Supplies &amp; Equipment</b>		<b>Budgeted</b>	<b>Expended</b>	<b>Remaining</b>	<b>% Exp.</b>	<b>% Rem.</b>
5010	Off. Supplies	\$ 1,000.00	\$ 884.69	\$ 115.31	88.5%	11.5%
5020	Off. Equip.	\$ 1,000.00	\$ 1,755.89	\$ (755.89)	175.6%	-75.6%
5040	Mileage	\$ 1,000.00	\$ 626.50	\$ 373.50	62.7%	37.4%
5050	Mtg. Exp.	\$ 6,000.00	\$ 5,096.98	\$ 903.02	84.9%	15.1%
5115	Comp. Hardware	\$ 1,000.00	\$ (1,996.93)	\$ 2,996.93	-199.7%	299.7%
5125	Comp. Software	\$ 500.00	\$ -	\$ 500.00	0.0%	100.0%
5160	POL	\$ 11,700.00	\$ 9,581.99	\$ 2,118.01	81.9%	18.1%
5210	Publications	\$ 250.00	\$ (182.06)	\$ 432.06	-72.8%	172.8%
5251	Promo Events	\$ -	\$ 325.00	\$ (325.00)	#DIV/0!	#DIV/0!
<b>Equipment</b>		<b>\$ 22,450.00</b>	<b>\$ 16,092.06</b>	<b>\$ 6,682.94</b>	<b>71.68%</b>	<b>29.77%</b>
<b>Other</b>		<b>Budgeted</b>	<b>Expended</b>	<b>Remaining</b>	<b>% Exp.</b>	<b>% Rem.</b>
6020	Vehicle	\$ -	\$ -	\$ -	#DIV/0!	#DIV/0!
6810	Fund Bal. Enh.	\$ -	\$ -	\$ -	#DIV/0!	#DIV/0!
<b>Totals</b>		<b>\$ 610,212.00</b>	<b>\$ 443,750.52</b>	<b>\$ 166,786.48</b>	<b>72.72%</b>	<b>27.33%</b>

Appendix D  
Tables & Graphs  
**Activities Report for 2010**

Veterans Assistance Commission began documenting all information in the Virtual Veterans Program. Using the program has significantly reduced the amount of administrative time being used to track information regarding contact information, and client services. Information was lost under 'Outreach' and 'Outreach Education' categories when I attempted to separate the two forms of outreach.

The following is the activities report for 2010

Print Date 12/28/2010

Summary Activity List From 12/1/2009 to 11/30/2010

Page 1

<u>Contact Code</u>	<u>Contact Description</u>	<u># Of Contacts</u>
Email	Email	14
Fax	Fax	111
Outreach	Outreach	310
Outreach Education	Outreach Education - Fairs, Forums, Expos, Etc...	0
Scheduled Appointment	Scheduled Appointment	1490
Telephone	Telephone	4925
VAC Bill Payment	Payment of Operating Expenses	243
Walk In	Walk In	876
Letter	Letter	395
Record Review	Reviewing Client Records	1368
Blank	Records Without Contact Types	726
	<b>Total Contacts:</b>	<b>10458</b>

<u>Service Types</u>	<u># Of Contacts</u>
Appeal To VA	12
Letters / Notes	0
Burial Benefits - VA	12
Medals Request	1
Burial Benefits - County	1
Miscellaneous	43
Compensation Claim	877
NSC Pension Claim	224
Death Pension	81
POA	2
Dental Restoration	19
Presentations	1
DIC	64
Referrals Service	185
Discharge	7
VA Unemployable Claim	0
Education	10
VA Special Comp.	0
Elected Official Request	8
VAC Office Expense	90
EVR	6
VAC Transport Expense	111
Financial Assistance	1564
VAC Transport Service	2264
Healthcare Benefits	105
Vets Records Request	14
Information	4253
VA Inpatient Rehab	6
Found Employment	3
<b>Total Services</b>	<b>9963</b>

## Appendix D Tables & Graphs

### VA Expenditures Summary for 2009

The VA provides the raw data around February each year for the previous year's expenditures. The following information is a breakdown of VA Compensation and Pension benefit dollars (C&P) that went to each county in the state over 2009. The information also includes Superintendent Mike Iwanicki's analysis of the information. This analysis only looks at C&P awards granted.

	<b>Year</b>	<b>Total Average C&amp;P per County</b>	<b>Average Annual C&amp;P per Veteran</b>
Average County Total C&P	2008	\$8,346,560	\$1,035.57
Average County Total C&P	2009	\$9,609,300	\$1,220.86
<b>Total Change from 2008</b>		<b>15.13%</b>	<b>17.89%</b>

The following formula was used to determine claims dollars lost due to veterans moving or dying, and estimated increase due to claims development less COLA increases.

	<b>State</b>	<b>McHenry Co.</b>
2008 Total C&P times 1000	\$851,349,185	\$13,204,780
Above result times the COLA increase	\$0	\$0
2009 Veterans Population in County <i>minus</i> 2008 Population	(19,270)	(185)
Difference in Population times 2008 Average C&P per Veteran	(\$19,955,664)	(\$191,900)
Above result times the COLA Increase (0.0%)	\$0	\$0.00
Total effect from loss/gain of Veterans = sum of above 2	(\$19,955,664)	(\$191,900)
Non-Claim development increase = COLA Increase minus above	(\$19,955,664)	(\$191,900)
Total Increase/(Decrease) in C&P = 2009 C&P minus 2008 C&P	\$128,799,429	\$ 2,375,848
<b>Increase from Claims Development = above minus non-claim development</b>	<b>\$148,755,094</b>	<b>\$ 2,567,748</b>

State wide C&P increased by just under \$128.8 million. There was no COLA increase so the only adjustment was for the loss of veterans which accounted for approximately \$19,955,664. This is the amount of additional successful claims prosecution that had to occur in order to maintain 2008's level of total C&P benefits going to Illinois' veterans and their families. The 2009 increase in C&P benefits awarded was 15.13% over 2008's total

McHenry County saw a 17.99% increase in C&P awards going to local veterans and their families. Claims developed and prosecuted through the VAC of McHenry County accounted for approximately 21.18% of the total increase in awards.

The VAC of McHenry County VSO's are Service Organization Representatives for; The American Legion, Disabled American Veterans, AMVETS, and the National Association of County Veterans Service Officers. Additionally, our office has a working relationship with the Veterans of Foreign Wars and the Illinois Department of Veterans Affairs. Thanks goes to the above organizations for their continued assistance and service to our local McHenry County veterans.

## Appendix D Tables & Graphs

**Highlight** = Mean or Center. This is the approximate midpoint of a particular category for all 102 Illinois Counties.

'#' = State ranking (from 1 to 102) for each category presented

VA EXPENDITURES FOR FY 2008 Expenditures in \$000							VA EXPENDITURES FOR FY 2009 Expenditures in \$000							2008 - 2009			
COUNTY	vp#	Veteran Population	Comp & Pension	Ave C&P Per Vet	Ave#		COUNTY	vp#	Veteran Population	Comp & Pension	Ave C&P Per Vet	Ave#	Total C&P %	%Change	Ave Per Vet %	%Change	
CARROLL	67	1,605	80 \$ 1,482	\$ 923.39	75		CARROLL	67	1,575	84 \$ 1,639	\$ 1,040.47	82	90	10.62%	90	12.68%	
COOK	1	257,438	1 \$ 256,135	\$ 994.94	63		COOK	1	247,543	1 \$ 290,296	\$ 1,172.71	64	70	13.34%	48	17.87%	
DEKALB	19	7,394	29 \$ 5,095	\$ 689.16	97		DEKALB	19	7,342	30 \$ 5,947	\$ 809.96	96	42	16.71%	55	17.53%	
DOUGLAS	66	1,611	83 \$ 1,410	\$ 875.27	80		DOUGLAS	66	1,594	81 \$ 1,726	\$ 1,082.61	76	4	22.37%	5	23.69%	
DU PAGE	2	51,780	4 \$ 36,148	\$ 698.09	96		DU PAGE	2	50,665	4 \$ 41,067	\$ 810.56	95	65	13.61%	65	16.11%	
EFFINGHAM	44	2,905	52 \$ 2,711	\$ 932.97	73		EFFINGHAM	44	2,882	50 \$ 3,225	\$ 1,118.87	71	17	18.96%	28	19.93%	
FULTON	38	3,408	44 \$ 3,115	\$ 913.90	76		FULTON	39	3,338	43 \$ 3,637	\$ 1,089.79	74	41	16.78%	33	19.25%	
GRUNDY	34	3,742	48 \$ 2,924	\$ 781.53	90		GRUNDY	34	3,751	46 \$ 3,448	\$ 919.31	90	30	17.90%	51	17.63%	
HANCOCK	58	1,773	60 \$ 2,226	\$ 1,256.08	34		HANCOCK	58	1,753	62 \$ 2,320	\$ 1,323.61	53	101	4.19%	101	5.38%	
HENDERSON	89	901	96 \$ 889	\$ 986.04	65		HENDERSON	89	887	95 \$ 1,007	\$ 1,135.42	69	71	13.32%	72	15.15%	
HENRY	29	4,752	32 \$ 4,674	\$ 983.47	68		HENRY	29	4,663	31 \$ 5,559	\$ 1,192.09	62	18	18.93%	14	21.21%	
IROQUOIS	47	2,757	51 \$ 2,830	\$ 1,026.42	61		IROQUOIS	47	2,714	48 \$ 3,296	\$ 1,214.40	59	46	16.49%	43	18.31%	
JERSEY	52	2,400	49 \$ 2,860	\$ 1,191.44	45		JERSEY	52	2,371	51 \$ 3,222	\$ 1,358.69	45	76	12.66%	80	14.04%	
KANE	7	25,432	8 \$ 16,697	\$ 656.53	99		KANE	7	25,030	8 \$ 19,453	\$ 777.20	99	44	16.51%	42	18.38%	
KANKAKEE	18	8,398	19 \$ 10,365	\$ 1,234.31	38		KANKAKEE	18	8,265	19 \$ 11,648	\$ 1,409.34	39	82	12.37%	79	14.18%	
KENDALL	24	5,764	33 \$ 4,230	\$ 733.88	94		KENDALL	22	5,809	33 \$ 5,079	\$ 874.31	94	9	20.07%	34	19.14%	
KNOX	28	4,795	24 \$ 5,854	\$ 1,220.74	42		KNOX	28	4,670	24 \$ 6,580	\$ 1,408.96	40	80	12.41%	68	15.42%	
LA SALLE	16	9,827	17 \$ 10,525	\$ 1,071.02	58		LA SALLE	16	9,617	18 \$ 12,040	\$ 1,251.95	57	60	14.39%	61	16.89%	
LAKE	4	41,334	3 \$ 40,665	\$ 983.83	67		LAKE	4	40,568	3 \$ 48,032	\$ 1,183.97	63	26	18.11%	25	20.34%	
LEE	48	2,547	47 \$ 2,927	\$ 1,149.19	51		LEE	49	2,486	49 \$ 3,295	\$ 1,325.78	52	77	12.58%	70	15.37%	
LIVINGSTON	45	2,891	53 \$ 2,684	\$ 928.20	74		LIVINGSTON	46	2,816	52 \$ 3,097	\$ 1,099.68	73	53	15.40%	40	18.47%	
MACON	17	9,745	16 \$ 10,720	\$ 1,100.07	54		MACON	17	9,433	16 \$ 13,079	\$ 1,386.56	42	6	22.01%	3	26.04%	
MACOUPIN	27	4,859	25 \$ 5,613	\$ 1,155.18	50		MACOUPIN	27	4,771	25 \$ 6,336	\$ 1,328.19	51	73	12.88%	74	14.98%	
MADISON	6	25,898	6 \$ 28,588	\$ 1,103.84	53		MADISON	6	25,369	6 \$ 33,721	\$ 1,329.19	50	29	17.96%	24	20.42%	
MASON	68	1,581	84 \$ 1,382	\$ 874.06	81		MASON	68	1,548	83 \$ 1,651	\$ 1,066.52	80	13	19.47%	10	22.02%	
MCDONOUGH	51	2,416	39 \$ 3,758	\$ 1,555.40	21		MCDONOUGH	51	2,384	38 \$ 4,451	\$ 1,867.51	19	24	18.44%	27	20.07%	
MCHENRY	9	20,361	14 \$ 13,205	\$ 648.52	100		MCHENRY	9	20,176	14 \$ 15,581	\$ 772.23	100	28	17.99%	36	19.08%	
MCLEAN	14	11,522	18 \$ 10,454	\$ 907.27	77		MCLEAN	14	11,510	17 \$ 12,278	\$ 1,066.71	79	35	17.45%	53	17.57%	
MERCER	57	1,801	79 \$ 1,565	\$ 868.84	82		MERCER	57	1,803	75 \$ 1,934	\$ 1,073.02	78	3	23.59%	6	23.50%	
MONTGOMERY	50	2,471	43 \$ 3,247	\$ 1,313.70	30		MONTGOMERY	50	2,402	45 \$ 3,505	\$ 1,459.03	35	95	7.95%	94	11.06%	
OGLE	26	4,924	37 \$ 3,871	\$ 786.14	89		OGLE	26	4,901	36 \$ 4,544	\$ 927.07	88	36	17.37%	45	17.93%	
PEORIA	11	14,822	15 \$ 12,208	\$ 823.63	86		PEORIA	11	14,418	15 \$ 14,287	\$ 990.90	86	37	17.03%	26	20.31%	
PIATT	65	1,639	90 \$ 1,161	\$ 708.62	95		PIATT	64	1,616	90 \$ 1,273	\$ 787.93	98	92	9.67%	93	11.19%	
ROCK ISLAND	12	12,942	11 \$ 13,917	\$ 1,075.32	57		ROCK ISLAND	12	12,600	12 \$ 15,783	\$ 1,252.58	56	69	13.41%	62	16.48%	
SAINT CLAIR	5	27,255	2 \$ 51,691	\$ 1,896.59	12		SAINT CLAIR	5	26,956	2 \$ 61,564	\$ 2,283.87	11	16	19.10%	23	20.42%	
SANGAMON	10	16,510	9 \$ 16,260	\$ 984.81	66		SANGAMON	10	16,146	9 \$ 18,694	\$ 1,157.76	66	57	14.97%	54	17.56%	
SCHUYLER	93	652	89 \$ 1,208	\$ 1,853.79	13		SCHUYLER	93	637	89 \$ 1,346	\$ 2,113.93	13	85	11.36%	81	14.03%	
STEPHENSON	30	4,334	34 \$ 4,225	\$ 975.03	69		STEPHENSON	30	4,262	34 \$ 4,865	\$ 1,141.51	67	55	15.13%	59	17.07%	
TAZEWELL	13	12,483	20 \$ 9,591	\$ 768.32	92		TAZEWELL	13	12,275	20 \$ 10,920	\$ 889.66	93	63	13.86%	66	15.79%	
WARREN	79	1,355	72 \$ 1,768	\$ 1,304.32	31		WARREN	79	1,317	77 \$ 1,867	\$ 1,418.23	38	99	5.63%	99	8.73%	
WASHINGTON	72	1,515	70 \$ 1,773	\$ 1,170.48	48		WASHINGTON	72	1,507	68 \$ 2,072	\$ 1,375.16	44	40	16.84%	56	17.49%	
WHITESIDE	23	5,775	26 \$ 5,533	\$ 958.09	70		WHITESIDE	24	5,706	26 \$ 6,325	\$ 1,108.38	72	62	14.31%	67	15.69%	
WILL	3	41,641	5 \$ 32,340	\$ 776.62	91		WILL	3	41,468	5 \$ 37,119	\$ 895.12	91	59	14.78%	71	15.26%	
WINNEBAGO	8	23,308	7 \$ 20,692	\$ 887.77	78		WINNEBAGO	8	22,887	7 \$ 23,659	\$ 1,033.74	83	61	14.34%	63	16.44%	
WOODFORD	39	3,364	61 \$ 2,142	\$ 636.89	101		WOODFORD	38	3,366	60 \$ 2,506	\$ 744.72	101	38	16.99%	60	16.93%	

## Appendix D Tables & Graphs

VA EXPENDITURES FOR FY 2008 Expenditures in \$000							VA EXPENDITURES FOR FY 2009 Expenditures in \$000							2008 - 2009			
COUNTY	vp#	Veteran Population	Comp \$# & Pension	Ave C&P Per Vet	Ave#		COUNTY	vp#	Veteran Population	Comp \$# & Pension	Ave C&P Per Vet	Ave#	Total C&P %#	%Change	Ave Per Vet %#	%Change	
ADAMS	21	6,024	21 \$ 9,394	\$ 1,559.40	20		ADAMS	21	5,860	21 \$ 10,826	\$ 1,847.53	20	54	15.25%	39	18.48%	
ALEXANDER	90	832	71 \$ 1,773	\$ 2,131.45	7		ALEXANDER	90	815	76 \$ 1,921	\$ 2,357.02	9	94	8.37%	95	10.58%	
BOND	69	1,554	65 \$ 1,910	\$ 1,229.38	40		BOND	69	1,524	67 \$ 2,100	\$ 1,377.82	43	91	9.93%	91	12.07%	
BOONE	36	3,496	58 \$ 2,320	\$ 663.59	98		BOONE	36	3,453	58 \$ 2,779	\$ 804.89	97	11	19.82%	12	21.29%	
BROWN	99	489	101 \$ 393	\$ 803.46	88		BROWN	99	484	101 \$ 446	\$ 921.60	89	67	13.54%	77	14.70%	
BUREAU	41	3,213	46 \$ 3,069	\$ 955.15	71		BUREAU	41	3,148	47 \$ 3,409	\$ 1,083.11	75	87	11.09%	86	13.40%	
CALHOUN	98	507	95 \$ 920	\$ 1,815.23	14		CALHOUN	98	492	96 \$ 972	\$ 1,975.58	16	98	5.65%	98	8.83%	
CASS	80	1,337	77 \$ 1,582	\$ 1,183.13	46		CASS	80	1,313	80 \$ 1,768	\$ 1,345.90	46	83	11.75%	83	13.76%	
CHAMPAIGN	15	11,365	10 \$ 14,188	\$ 1,248.40	35		CHAMPAIGN	15	11,091	10 \$ 16,677	\$ 1,503.71	30	33	17.54%	22	20.45%	
CHRISTIAN	43	2,986	38 \$ 3,778	\$ 1,265.14	33		CHRISTIAN	43	2,916	39 \$ 4,339	\$ 1,487.93	32	58	14.85%	52	17.61%	
CLARK	74	1,447	59 \$ 2,304	\$ 1,592.16	19		CLARK	75	1,397	59 \$ 2,566	\$ 1,837.07	21	84	11.37%	69	15.38%	
CLAY	84	1,147	75 \$ 1,698	\$ 1,480.04	24		CLAY	85	1,117	74 \$ 1,971	\$ 1,765.02	25	48	16.13%	32	19.25%	
CLINTON	37	3,434	30 \$ 4,927	\$ 1,434.72	27		CLINTON	37	3,386	28 \$ 5,991	\$ 1,769.32	23	8	21.59%	9	23.32%	
COLES	33	3,880	31 \$ 4,777	\$ 1,231.21	39		COLES	33	3,764	32 \$ 5,521	\$ 1,466.65	34	51	15.56%	35	19.12%	
CRAWFORD	56	1,982	45 \$ 3,071	\$ 1,549.22	22		CRAWFORD	56	1,952	44 \$ 3,583	\$ 1,835.23	22	43	16.67%	41	18.46%	
CUMBERLAND	87	1,000	87 \$ 1,336	\$ 1,336.07	29		CUMBERLAND	87	1,008	85 \$ 1,542	\$ 1,530.35	29	52	15.43%	78	14.54%	
DEWITT	64	1,648	85 \$ 1,356	\$ 822.90	87		DEWITT	63	1,618	82 \$ 1,658	\$ 1,024.68	84	5	22.23%	4	24.52%	
EDGAR	62	1,673	57 \$ 2,431	\$ 1,453.57	25		EDGAR	62	1,641	56 \$ 2,900	\$ 1,766.88	24	15	19.25%	11	21.55%	
EDWARDS	91	730	98 \$ 725	\$ 992.48	64		EDWARDS	91	718	98 \$ 839	\$ 1,168.27	65	49	15.69%	50	17.71%	
FAYETTE	61	1,711	68 \$ 1,872	\$ 1,094.03	55		FAYETTE	61	1,678	66 \$ 2,218	\$ 1,321.70	55	22	18.52%	19	20.81%	
FORD	75	1,417	88 \$ 1,245	\$ 878.38	79		FORD	74	1,402	86 \$ 1,486	\$ 1,059.74	81	14	19.37%	21	20.65%	
FRANKLIN	31	4,248	22 \$ 9,231	\$ 2,173.25	4		FRANKLIN	31	4,185	22 \$ 10,250	\$ 2,449.12	6	88	11.03%	89	12.69%	
GALLATIN	95	603	92 \$ 1,001	\$ 1,659.01	18		GALLATIN	95	590	93 \$ 1,125	\$ 1,905.50	17	81	12.40%	75	14.86%	
GREENE	70	1,543	76 \$ 1,679	\$ 1,088.09	56		GREENE	70	1,521	70 \$ 2,042	\$ 1,342.20	48	7	21.59%	8	23.35%	
HAMILTON	92	688	81 \$ 1,479	\$ 2,148.58	5		HAMILTON	92	669	79 \$ 1,773	\$ 2,651.91	4	10	19.86%	7	23.43%	
HARDIN	102	410	93 \$ 965	\$ 2,353.12	2		HARDIN	102	399	92 \$ 1,140	\$ 2,853.66	2	27	18.04%	13	21.27%	
JACKSON	25	5,404	23 \$ 8,057	\$ 1,490.86	23		JACKSON	25	5,342	23 \$ 9,145	\$ 1,711.78	27	68	13.50%	76	14.82%	
JASPER	88	956	94 \$ 961	\$ 1,005.29	62		JASPER	88	951	94 \$ 1,081	\$ 1,135.83	68	78	12.47%	88	12.99%	
JEFFERSON	35	3,613	27 \$ 5,201	\$ 1,439.40	26		JEFFERSON	35	3,581	27 \$ 6,227	\$ 1,739.15	26	12	19.73%	18	20.82%	
JO DAVIESS	55	2,263	66 \$ 1,891	\$ 835.57	84		JO DAVIESS	55	2,241	64 \$ 2,242	\$ 1,000.25	85	21	18.55%	29	19.71%	
JOHNSON	82	1,204	55 \$ 2,572	\$ 2,136.39	6		JOHNSON	82	1,193	57 \$ 2,892	\$ 2,425.10	7	79	12.44%	85	13.51%	
LAWRENCE	71	1,542	69 \$ 1,803	\$ 1,168.83	49		LAWRENCE	71	1,511	71 \$ 2,033	\$ 1,345.75	47	75	12.75%	73	15.14%	
LOGAN	49	2,539	64 \$ 1,925	\$ 758.33	93		LOGAN	48	2,507	65 \$ 2,239	\$ 893.08	92	47	16.31%	49	17.77%	
MARION	32	4,189	28 \$ 5,123	\$ 1,222.80	41		MARION	32	4,139	29 \$ 5,968	\$ 1,441.92	36	45	16.50%	46	17.92%	
MARSHALL	83	1,180	82 \$ 1,416	\$ 1,200.31	44		MARSHALL	83	1,150	88 \$ 1,372	\$ 1,193.51	61	102	-3.11%	102	-0.57%	
MASSAC	78	1,369	50 \$ 2,831	\$ 2,068.10	9		MASSAC	78	1,332	55 \$ 2,984	\$ 2,240.48	12	100	5.42%	100	8.33%	
MENARD	86	1,118	91 \$ 1,063	\$ 951.33	72		MENARD	84	1,118	91 \$ 1,262	\$ 1,129.39	70	19	18.69%	37	18.72%	
MONROE	46	2,880	56 \$ 2,432	\$ 844.62	83		MONROE	45	2,866	53 \$ 3,076	\$ 1,073.41	77	2	26.47%	2	27.09%	
MORGAN	40	3,249	36 \$ 4,021	\$ 1,237.52	37		MORGAN	40	3,169	37 \$ 4,459	\$ 1,407.25	41	89	10.89%	84	13.72%	
MOULTRIE	85	1,134	86 \$ 1,341	\$ 1,182.11	47		MOULTRIE	86	1,099	87 \$ 1,454	\$ 1,323.25	54	93	8.44%	92	11.94%	
PERRY	59	1,772	42 \$ 3,460	\$ 1,952.87	11		PERRY	59	1,749	41 \$ 4,078	\$ 2,331.45	10	31	17.85%	31	19.39%	
PIKE	77	1,392	67 \$ 1,885	\$ 1,354.38	28		PIKE	77	1,365	72 \$ 2,027	\$ 1,485.26	33	96	7.55%	96	9.66%	
POPE	101	454	97 \$ 788	\$ 1,735.36	16		POPE	101	441	97 \$ 927	\$ 2,099.28	14	32	17.55%	16	20.97%	
PULASKI	96	547	73 \$ 1,763	\$ 3,220.92	1		PULASKI	96	529	73 \$ 1,995	\$ 3,771.41	1	72	13.16%	58	17.09%	
PUTNAM	94	645	99 \$ 536	\$ 830.13	85		PUTNAM	94	630	99 \$ 596	\$ 946.51	87	86	11.34%	82	14.02%	
RANDOLPH	42	3,072	40 \$ 3,697	\$ 1,203.50	43		RANDOLPH	42	3,031	40 \$ 4,324	\$ 1,426.67	37	39	16.94%	38	18.54%	
RICHLAND	76	1,407	74 \$ 1,744	\$ 1,239.74	36		RICHLAND	76	1,376	69 \$ 2,065	\$ 1,500.96	31	23	18.44%	15	21.07%	
SALINE	53	2,382	35 \$ 4,164	\$ 1,748.11	15		SALINE	53	2,315	35 \$ 4,700	\$ 2,030.58	15	74	12.86%	64	16.16%	
SCOTT	100	486	100 \$ 508	\$ 1,045.03	60		SCOTT	100	478	100 \$ 585	\$ 1,224.72	58	56	15.11%	57	17.19%	
SHELBY	54	2,316	54 \$ 2,598	\$ 1,121.62	52		SHELBY	54	2,276	54 \$ 3,053	\$ 1,341.10	49	34	17.51%	30	19.57%	
STARK	97	513	102 \$ 219	\$ 427.26	102		STARK	97	493	102 \$ 332	\$ 673.72	102	1	51.65%	1	57.68%	
UNION	60	1,726	41 \$ 3,468	\$ 2,009.32	10		UNION	60	1,692	42 \$ 4,008	\$ 2,368.91	8	50	15.58%	47	17.90%	
VERMILION	20	6,553	12 \$ 13,853	\$ 2,114.09	8		VERMILION	20	6,295	13 \$ 15,743	\$ 2,501.01	5	64	13.64%	44	18.30%	
WABASH	73	1,482	78 \$ 1,567	\$ 1,057.61	59		WABASH	73	1,487	78 \$ 1,780	\$ 1,196.70	60	66	13.59%	87	13.15%	
WAYNE	81	1,246	62 \$ 2,138	\$ 1,716.27	17		WAYNE	81	1,211	63 \$ 2,268	\$ 1,873.32	18	97	6.04%	97	9.15%	
WHITE	63	1,649	63 \$ 2,098	\$ 1,272.15	32		WHITE	65	1,611	61 \$ 2,478	\$ 1,538.53	28	25	18.16%	17	20.94%	
WILLIAMSON	22	5,826	13 \$ 13,443	\$ 2,307.14	3		WILLIAMSON	23	5,722	11 \$ 15,942	\$ 2,785.95	3	20	18.59%	20	20.75%	