

Bathing Beach Program



Deep Spring Woods 1- Wonder Lake

MCDH

**McHenry County
Department of Health**

“Public Bathing Beach”

- **Any body of water used for the purpose of public swimming or recreational bathing**
 - **Does not include beaches at private residences for private use**
 - **Does include subdivision / association beaches**

Program Objectives

- **Prevention of illness**
- **Prevention of accidents**

Characteristics of Surface Bodies of Water

LIFE SAFETY	SANITATION	WATER QUALITY
-Waves	- No permanent sanitary facilities	- No disinfection
		- Multiple influences
- Plants / weeds		Stormwater run-off
		Precipitation
-Shared uses / Motor craft		Wild/domestic animals
		Bathers
		Agricultural run-off
		Wastewater
		- Conditions Change

Illinois Swimming Pool and Bathing Beach Code

- Licensure
- Life Safety
- Sanitation
- Water Quality Standards
- Agreement with IDPH for local oversight



Shore Hills, Wonder Lake

Beach Inspections

2 full inspections / season

Re-inspections as necessary

- U.S. Coast Guard approved ring buoys
- Wading and swimming area buoys
- Outer limit markers every 100'
- Regulations posted
- Telephone within 500' of beach
- Toilets within 300'
- Beach clear of debris / rubbish
- Operating hours displayed
- Lifeguard provided or accompanied by responsible person



NOTICE

BEACH REGULATIONS

- The beach water is not suitable for drinking. Avoid swallowing beach water.
- Admission to the beach may be refused to all persons having any contagious disease, infectious conditions such as colds, fever, ringworm, foot infections, skin lesions, carbuncles, boils, diarrhea, vomiting, inflamed eyes, ear discharges, or any other condition which has the appearance of being infectious. Persons with excessive sunburn, abrasions which have not healed, corn plasters, bunion pads, adhesive tape, rubber bandages, or other bandages of any kind may also be refused admittance. A person under the influence of alcohol or exhibiting erratic behavior shall not be permitted in the beach area.
- Littering is prohibited. In addition, no food, drink, gum or tobacco is allowed in the water. Glass containers are prohibited throughout the beach area.
- All children who are not toilet-trained shall wear tight fitting rubber or plastic pants.
- No one should swim alone.
- Persons under the age of 16 must be accompanied by a responsible person 16 years of age or older unless a lifeguard is present.
- Personal conduct within the beach must be such that safety is not jeopardized.
- Diving in shallow water is not permitted.
- Caution shall be exercised in the use of diving facilities.
- Swimming is prohibited after sunset or before sunrise, or when lightning is present, including a 15-minute period after the last lightning is observed.
- No pets are permitted in the beach area.
- Feeding of wildlife or other actions that encourage their presence is prohibited.
- Patrons are encouraged to protect themselves from sun exposure.

Illinois Department of Public Health

Potential Causes of Waterborne Illness

- Bacterial

- E coli

- Viral

- Norovirus

- Parasitic

- Schistosome Dermatitis

- (swimmer's itch)

- Cryptosporidium

- Giardia

- Chemical



Potential Routes of Exposure

- **Ingestion**
 - **Gastrointestinal**

- **Dermal**
 - **Swimmer's itch**
 - **Ear infection**

Rock Cut State Park

Rockford

- 1995
- 12 confirmed cases
- E coli 0157:H7
- Basis for bacteriological quality indicator – E coli
- Accurate / direct measure of fecal contamination



Rock Cut State Park

Sample Protocol

- Minimum every 2 weeks
- More frequently before holidays, after rain events
- 2 samples per beach (shallow and deep)
- Colilert Quantitray Method
 - Results in 24 hours
 - Most probable number of E coli cfu/100 ml



“Beach Closed”

- Bacteria levels exceed 235 colony forming units (cfu) of E coli per 100 milliliters of water in both shallow and deep samples.*

- Known incident that may have contaminated the water.

- ✓ Beaches are closed until 2 satisfactory samples are obtained.

- ✓ Daily sampling is initiated.

McHENRY COUNTY DEPARTMENT OF HEALTH
2200 N. SEMINARY AVE.
WOODSTOCK, IL 60098
(815) 334-4585
WWW.CO.MCHENRY.IL.US

MCDH

WARNING
"BEACH CLOSED"

Date Posted
Beach Notified @ 9:40am

Due to the results of water samples taken on _____ E coli bacterial levels have exceeded closing limits.

THE BEACH IS CLOSED TO SWIMMING.

LOCATION:	BEACH NAME	
	CITY	
E COLI COUNTS:	SHALLOW	
	DEEP	

E coli Bacteria: is found in the intestines and feces of warm blooded animals and humans. E coli can cause gastrointestinal problems if ingested. Skin contact with E coli bacteria in water can cause ear, nose and throat infections and skin rashes.

The closing limit for E coli is **235** colonies per 100 mL in 2 samples collected on the same day. The Department will evaluate the causes for these increased counts and will sample daily until 2 satisfactory samples taken on the same day are below the advisory standard of 125 colonies per 100mL. The beach is closed until further notification by the Department.

Public Health Administrator

* Established by the Illinois Swimming Facility Act

“Warning Advisory”

- Bacteria levels exceed 126 colony forming units (cfu) of E coli per 100 milliliters of water in both shallow and deep samples.

McHENRY COUNTY DEPARTMENT OF HEALTH
MCDH
2203 N. SEMINARY AVE.
WOODSTOCK, IL 60098
(815) 334-4585
WWW.CO.MCHENRY.IL.US

**WARNING
ADVISORY**

Date Posted _____
BEACH NOTIFIED @ 9:45am

Due to the results of water samples taken on _____ E coli bacterial levels have exceeded advisory limits.

SWIM AT YOUR OWN RISK.

LOCATION:	BEACH NAME
	CITY
E COLI COUNTS:	SHALLOW
	DEEP

E coli Bacteria: A bacteria that are found in the intestines and feces of warm blooded animals and humans. The **warning limit** for E coli is 126 colonies per 100 mL. When bacterial counts reach this level, the Department will evaluate causes for these increased counts and increase sampling frequency.

The advisory limit for E coli is 126 colonies /100 mL for 2 samples collected on the same day or 236 colonies/100ml for 1 sample. The Department will evaluate the causes for these increased counts and will collect follow-up samples. The beach cannot reopen until 2 samples taken on the same day are below the advisory and closing limits.

Public Health Administrator

✓ Beaches are on “Warning Advisory” until 2 satisfactory samples are obtained

✓ Daily / weekly sampling is initiated

Factors Affecting Recovery

- **Natural die-off**
- **Wind and wave action**
- **Ultraviolet light from the sun**
- **Precipitation**



Morrison Park Beach, Lily Lake

Affects of Precipitation

West Beach Park Crystal Lake

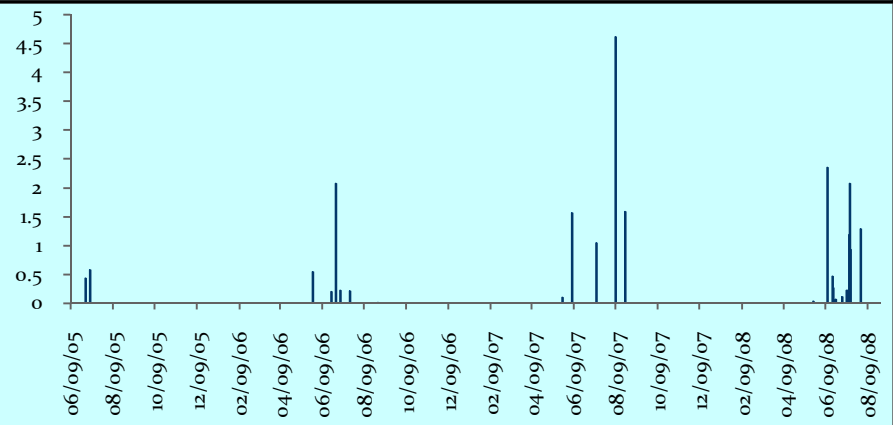
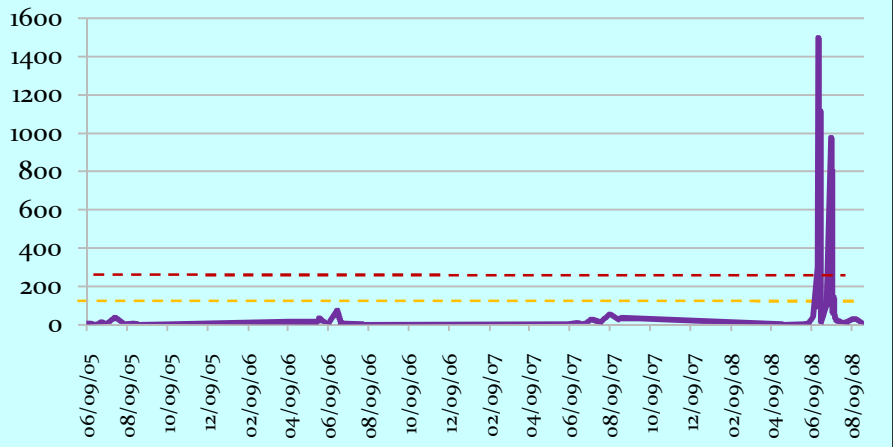
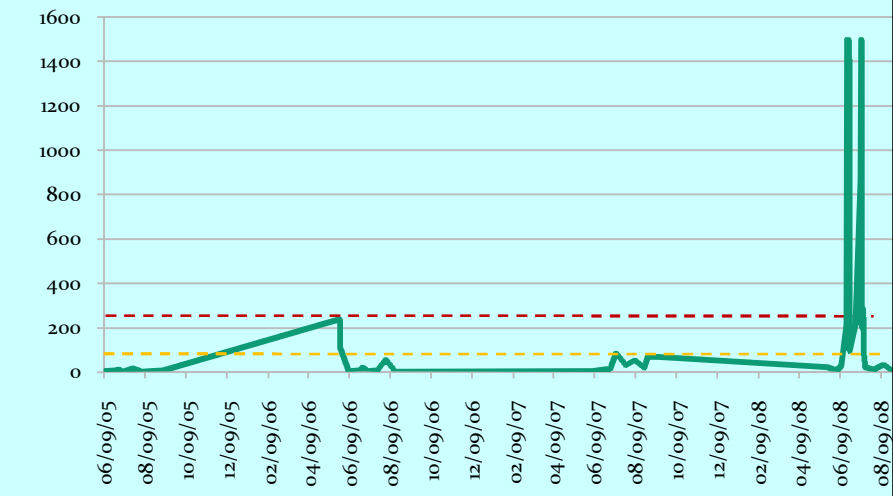
**E coli – Colony
Forming Units (cfu)**

Shallow

Deep

**Advisory
Level**

**Beach
Closed**



Precipitation in Inches

Affects of Precipitation

Indian Trails Lake in the Hills

**E coli – Colony
Forming Units (cfu)**

— Shallow

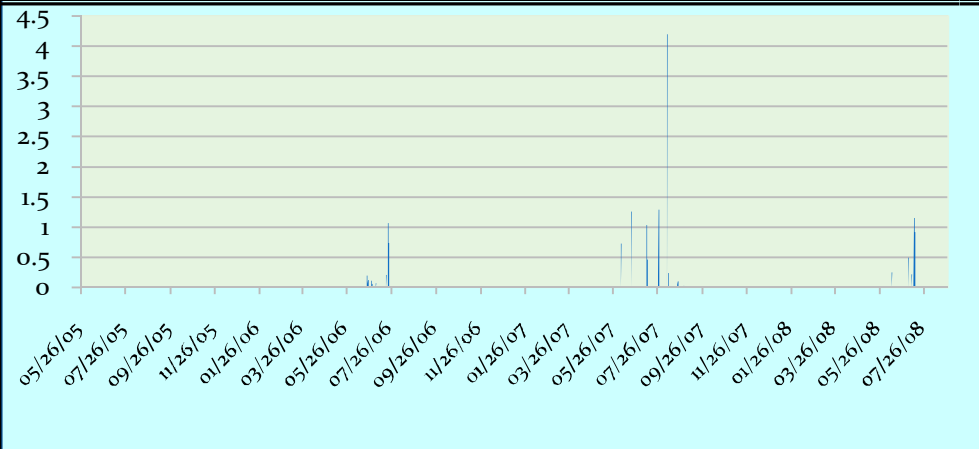
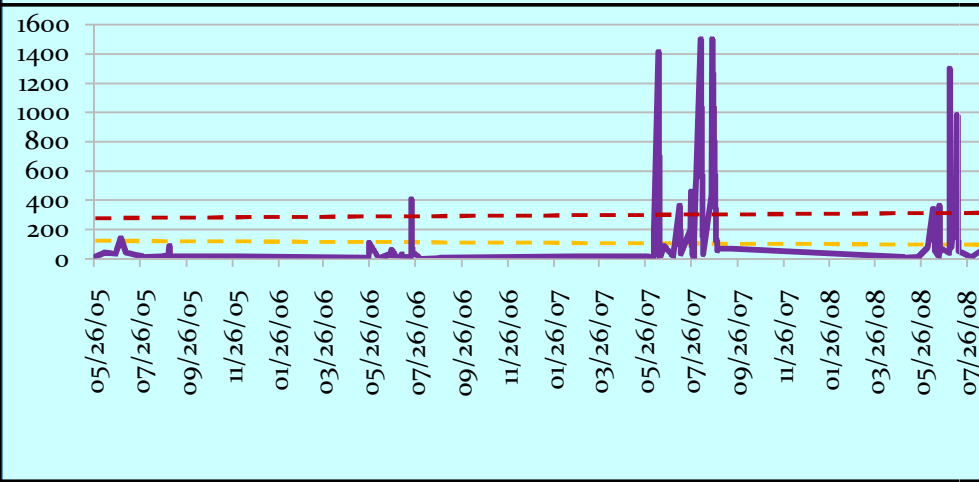
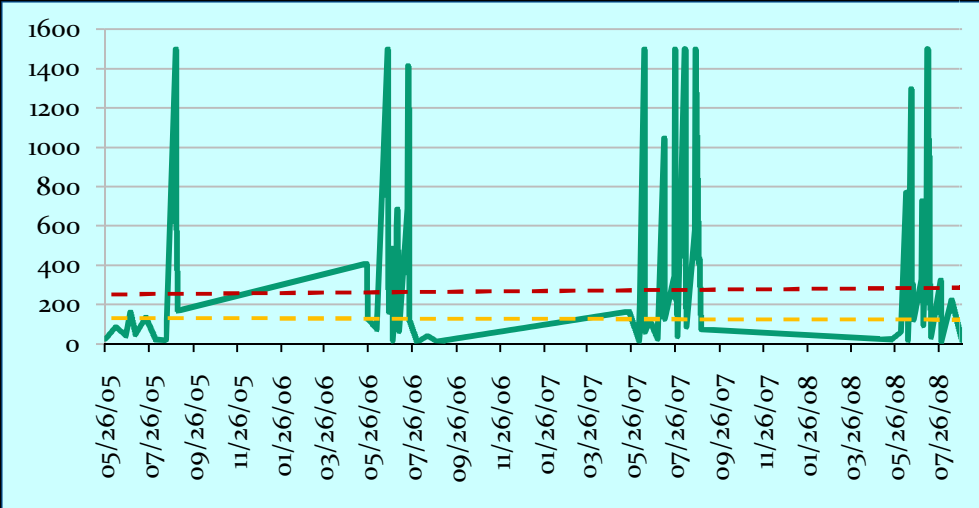
— Deep

- - - Advisory

Level

- - - Beach

Closed



Precipitation in Inches

McHenry County Web Page

**McHENRY
COUNTY
Illinois**



[Home](#) [A-Z Services](#) [Departments](#) [Employment](#) [FAQs](#) [Hours](#)

McHenry County Department of Health,
Patrick McNulty, Public Health Administrator
Phone: 815/334.4510 Fax: 815/334.4635

 [Follow us on Twitter!](#)

[Department Home](#)

[Contacts](#)

[Animal Control](#)

[Permits / Ordinances](#)

[Board of Health](#)

[Clinic Information](#)

[Educational Materials](#)

[Food Recall](#)

[Food Program](#)

[General Information](#)

[Emerg. Preparedness](#)

[Press Releases](#)

Emergency After Hours Telephone: 815/344-7421 [Office Locations](#) [Links](#) [Health Alert](#)

County Beach Testing:

[Beach Home Page](#) [Sample Results](#) [Why is my Beach Closed?](#)

Beach Water Testing

To protect the public's health, the McHenry County Department of Health requires that each of the licensed public beaches in McHenry County be sampled every two weeks on a routine basis. Health Department staff collects water in the shallow and deep areas and analyzes them in the McHenry County Department of Health's laboratory. Samples are analyzed for Escherichia coli (E coli.)

E coli has become nationally recognized as the standard for bathing beaches. E coli levels that exceed 235 colony forming units (cfu) per 100 milliliters in a shallow and a deep sample, collected on the same day will require the closing of that beach. A beach will remain closed until 2 samples collected on the same day are below the 235 E coli standard.

McHenry County has 34 beaches on its 13 lakes. The beaches are inspected and water samples taken throughout the summer to ensure public safety and satisfactory water quality.

For more information. Please click on the link: [Why is my Beach Closed Today?](#)

Beach Status as of 7/10/2009

Closed Beaches

» None

Beaches on Advisoy

» None

[Beach Testing Results](#)

Quick Links

» [Yearbook](#)

» [AZ Services](#)

Working to prevent disease and promote health and safety for all people of McHenry County since 1966.