

Franchising of Solid Waste Removal Services Board of Health

McHenry County Department of Health
Environmental Health Division



2200 N Seminary Ave
Woodstock IL 60098

815-334-4585

Franchising Solid Waste Removal Services

- Exclusive Waste Hauler Agreement –
 - ✓ Single hauler serves a specific area to provide specific services
 - ✓ Resident cannot hire another licensed solid waste hauler
 - ✓ Residents may use alternative, legal means of solid waste disposal

Advantages to Franchising Waste Hauling Services

- Reduced costs
- Additional services
- Customized for community needs
- Reduced truck traffic – less wear and tear on roads, less emissions
- Single accountable contractor

Why Did We Consider Franchising Services?

- Reviewed open burning complaints since April 1, 2008 – garbage/rubbish and landscape waste.
- Received many comments from residents:
 - Economical Alternatives
 - Loose Leaf Pick Up
- Commonly done in municipalities – more services, less cost than unincorporated areas

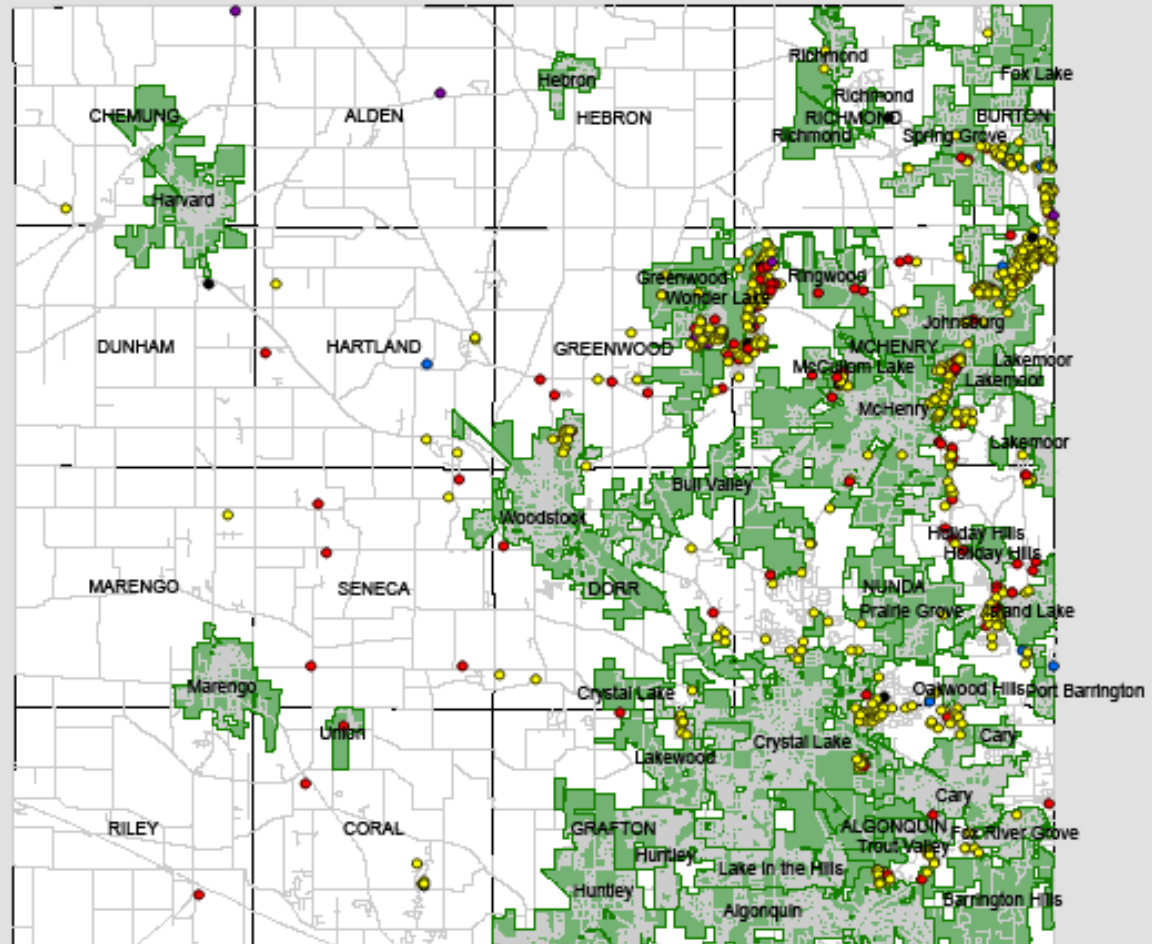


Open Burning Complaints

Open Burning Complaints

UPDATED OCTOBER 21, 2009

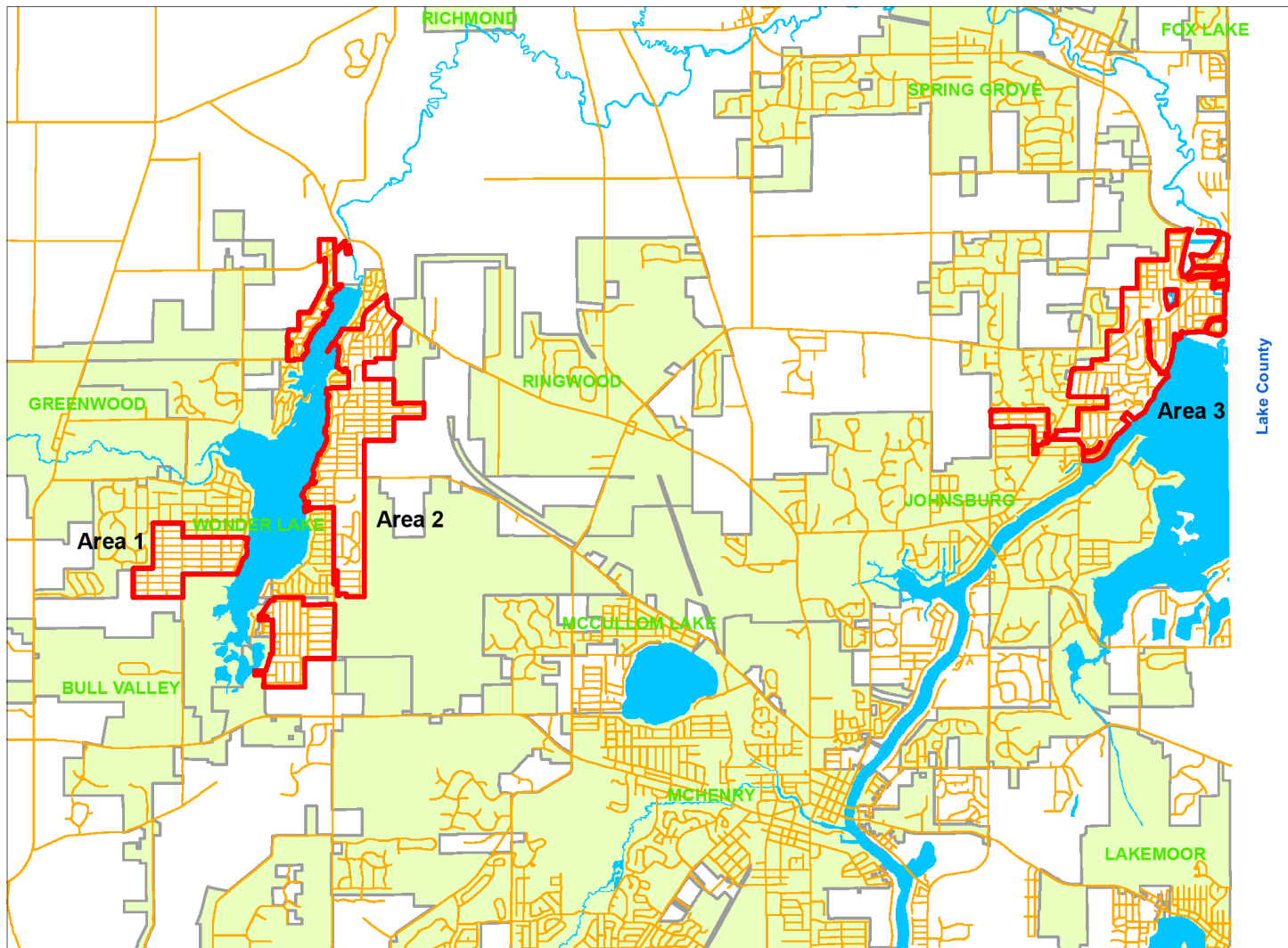
- UNABLE TO CONFIRM COMPLAINT
- NO VIOLATION
- GARBAGE
- WARN AND VN
- WARNING
- Municipal Boundary
- Townships



Identified Three Potential Pilot Areas for Franchising Solid Waste Services:

- Density
- Number of Substantiated Complaints
- Compact Geographical Area
- Concerns received from residents in these areas

Comprehensive Solid Waste Services Areas



Lake County

Legend

- Study Areas
- Road Centerlines
- Hydrography
- Incorporated Areas

■

0 2,000 4,000 8,000
Feet

1 inch = 2,000 feet
at original print size of 36" x 24"

Data Source

Study Areas: McHenry County GIS and Health Departments
 Roads, Incorporated Areas, and Hydrography: McHenry County GIS Department



Map produced by McHenry County GIS Dept
 Date: 10/23/09

MAP-ID 1000110 - 36

INFORMATION ON THIS MAP MAY CONTAIN INACCURACIES OR TYPOGRAPHICAL ERRORS. INFORMATION MAY BE CHANGED OR UPDATED WITHOUT NOTICE. INFORMATION ON THIS MAP IS PROVIDED "AS-IS" WITHOUT WARRANTY OF ANY KIND, EITHER EXPRESS OR IMPLIED, INCLUDING, WITHOUT LIMITATION, ANY IMPLIED WARRANTIES OF MERCHANTABILITY OR FITNESS FOR A PARTICULAR PURPOSE. IN NO EVENT WILL MCHENRY COUNTY BE LIABLE TO YOU OR TO ANY THIRD PARTY FOR ANY DIRECT, INDIRECT, INCIDENTAL, CONSEQUENTIAL, SPECIAL OR EXEMPLARY DAMAGES OR LOST PROFIT RESULTING FROM ANY USE OR MISUSE OF THIS INFORMATION. INFORMATION HEREIN HAS BEEN REPRODUCED FROM ORIGINAL SOURCES. INFORMATION PRODUCED ON THIS MAP SHOULD NOT BE USED IN PLACE OF A SURVEY OR LEGAL DOCUMENTS.

OBJECTIVES

- Provide a program consistent with the goals of the McHenry County Solid Waste Plan
- Address residents' need for comprehensive solid waste removal services
- Increase recycling rates for McHenry County
- Expand alternatives for environmentally sound disposal of landscape waste and beneficial re-use of landscape waste
- Provide solid waste services for unincorporated residents at a comparable or lower cost than current cost

PROCESS

- Identified pilot areas
- Confirmed authority with the McHenry County State's Attorney's Office
- Worked with GIS Dept. to identify characteristics of the areas
- Presented to Board of Health, Public Health and Human Services, and Natural Environment and Resources
- Press release regarding the process – July 21

PROCESS

- Worked with Purchasing Department to develop a Request for Proposal
- Interviewed Solid Waste Haulers who responded to the Request for Proposal
- Met with subdivision representatives in pilot areas
- Public Notification – 4,255 residences
- Two Public Meetings: Total of 104 attendees

SUMMARY OF COMMENTS

Summary of comments received as of November 6, 2009	Pistakee Highlands	Wonder Lake	Location Not Provided	Totals
Supports Solid Waste Franchise Agreement Expressed support of the following: Cost estimates, landscape waste removal services, by-the-bag option, covered wheeled toters, less truck traffic	22	36	4	62
Opposes Solid Waste Franchise Agreement Expressed the following concerns: Opposed to government involvement in waste hauling services, wants ability to choose waste hauler, accountability for quality of service, franchising eliminates competition and would eliminate jobs, will cost more because they do not need landscape waste removal services, no senior rates	29	13	2	44
Information/Clarification Requests	7	10	3	20

Recommended Services

- 32, 64 or 95 gal covered refuse toter – cost based on size of container
- By-the-Bag option – billed quarterly for recycling/landscape waste services
- 1 Bulk item per week
- A 95 gallon covered recycling toter with pick-up every other week

RECOMMENDED SERVICES

- Unlimited curbside pick-up of landscape waste April – December
- 3 Loose Leaf Collections (1 in Spring, 2 in Fall)
- Participants must subscribe to all of the program services

RECOMMENDED SERVICES

- Residents billed directly by waste hauler on a quarterly basis
- 3 year cycle on the contract - re-bid after 3 years
- Cost will increase 4% the second and third year
- Staff is not requesting additional staff or resources to oversee the program.

RECOMMENDED VENDOR FOR ALL AREAS: GROOT INDUSTRIES

Includes garbage/refuse, recycling & landscape waste curbside pick- up services	QUARTERLY COST ESTIMATES		
	Year 1	Year 2	Year 3
90 gal refuse toter	\$68.49	\$71.23	\$74.08
64 gal refuse toter	\$63.84	\$66.39	\$69.05
35 gal refuse toter	\$60.84	\$63.27	\$65.80
By-the-Bag (refuse	\$3.00/bag + \$28.59/quarter	\$3.12/bag + \$29.73/quarter	\$3.24/bag + \$30.92/quarter