

# McHenry County

## BREAST AND CERVICAL CANCER TRENDS

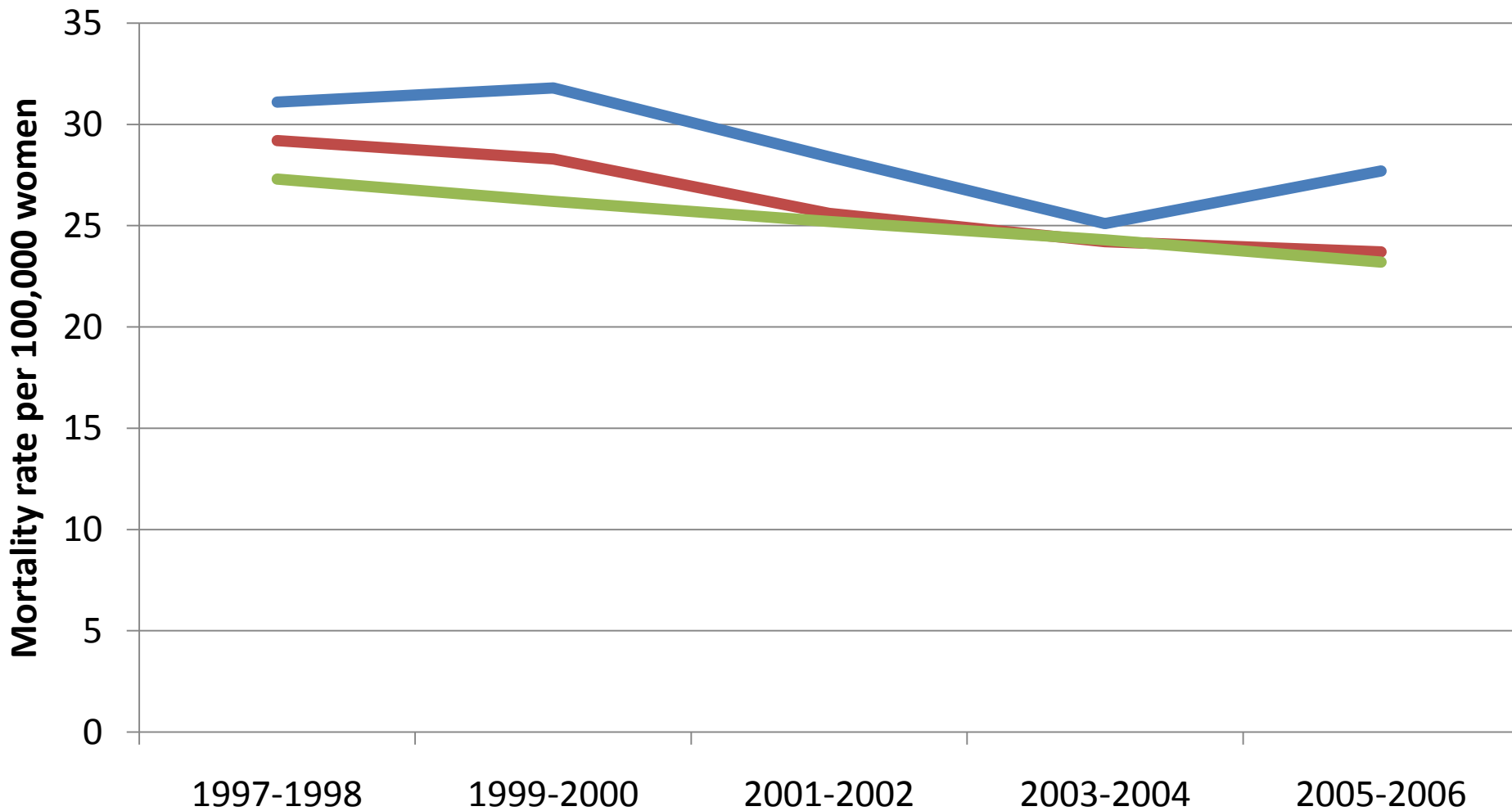
Kristen Harrison, MPH, Epidemiologist  
McHenry County Department of Health  
February 2010

# Breast Cancer Rates and Breast Cancer Screening Statistics

*In McHenry County for 2002-2006, the incidence of female invasive breast cancer was 135.7 newly diagnosed breast cancers per 100,000 women, compared to 127.3 for Illinois (whites only)*

# 2-Year Female Breast Cancer Age-Adjusted\* Mortality Rates for McHenry County, Illinois and US, 1997-2006

McHenry County Illinois (whites only) US (whites only)



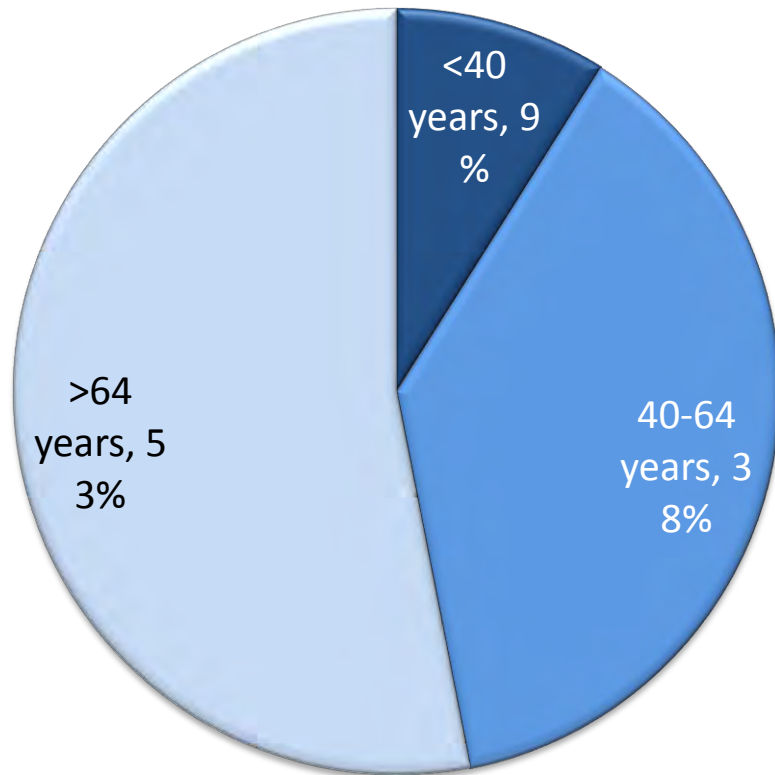
\*Standardized to 2000 US Standard Population

Source: CDC, NCHS. Compressed Mortality File 1999-2006. CDC WONDER On-line Database, compiled from Compressed Mortality File 1999-2006 Series 20 No. 2L.

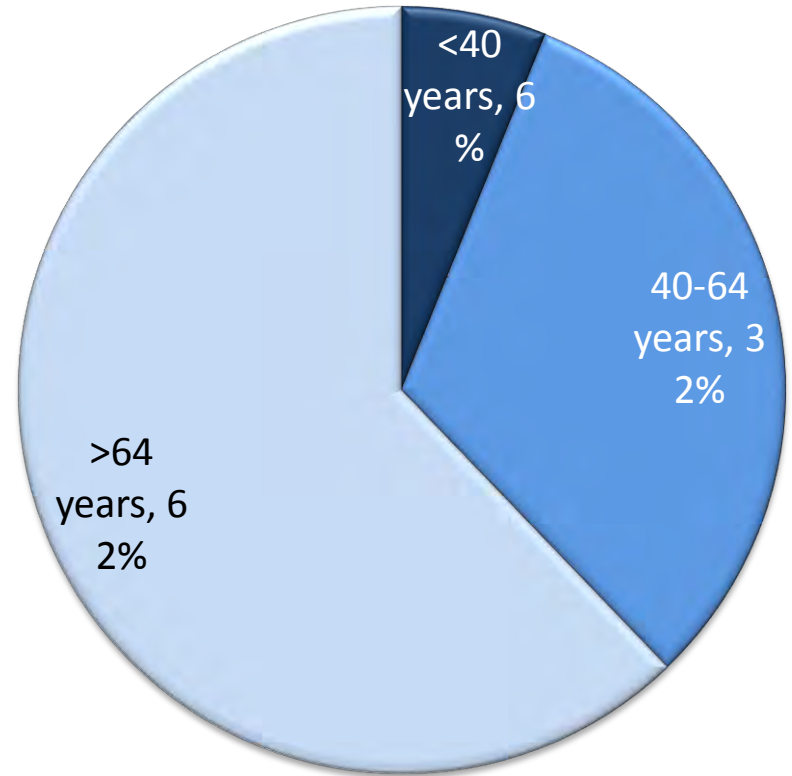


# Percent Distribution of Female Breast Cancer Deaths by Age Group, 2002-2006

## McHenry County

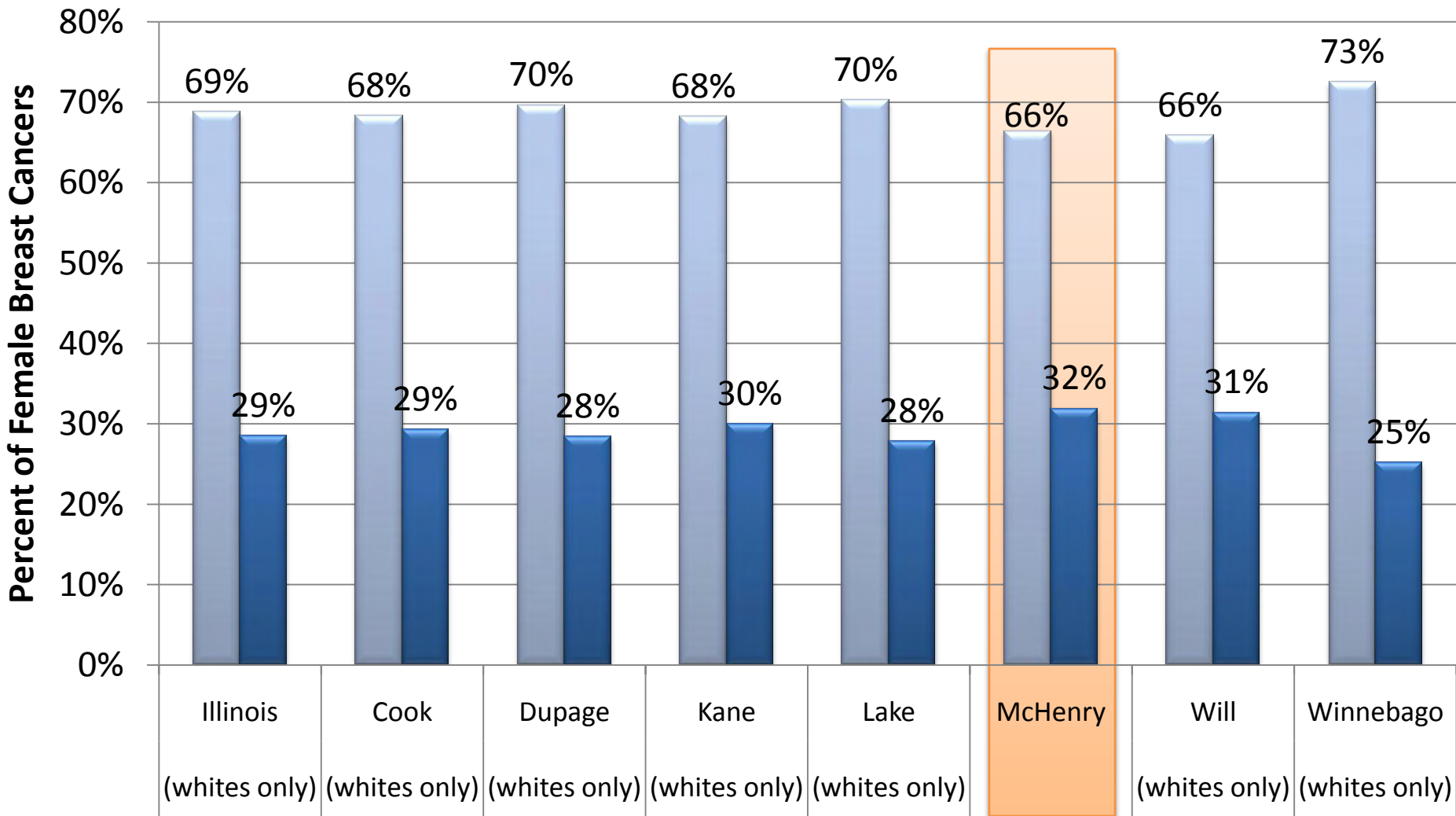


## Illinois (whites only)



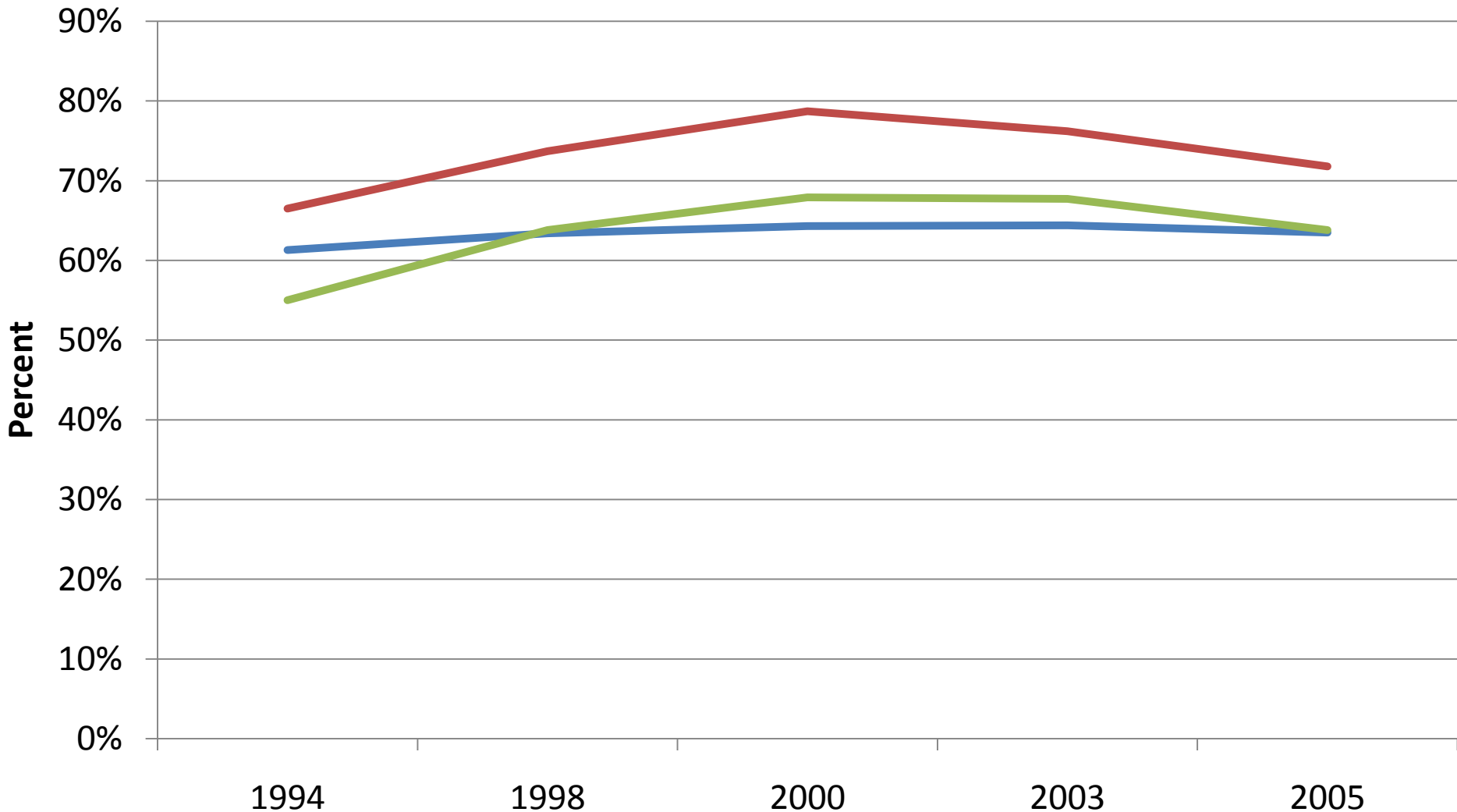
# Percent of Female Breast Cancer Diagnoses by Stages in Select Illinois Counties, 2002-2006

■ in situ & Localized (Early Stages)
 ■ Regional & Distant (Late Stages)



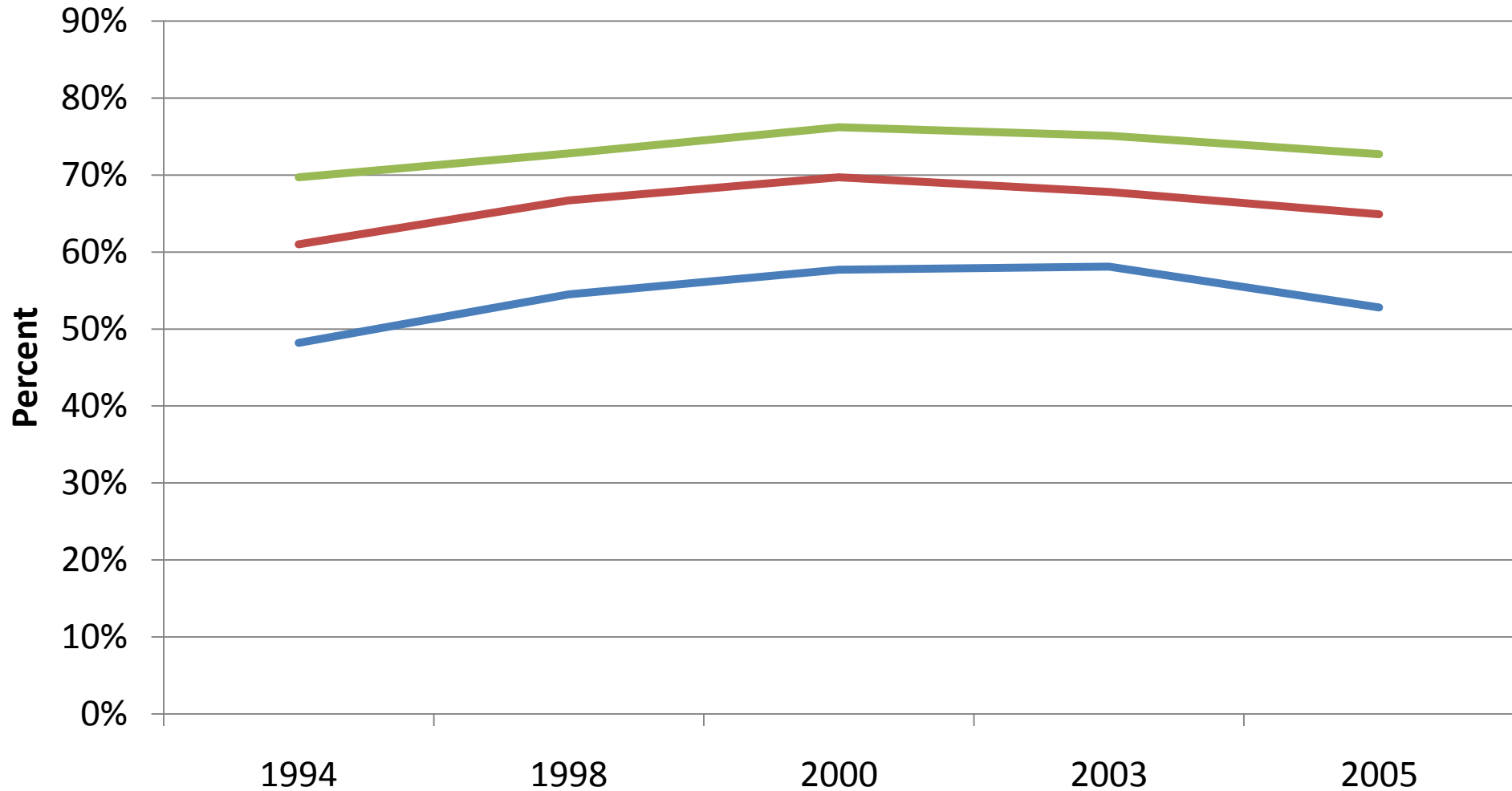
# Percent of US Women Aged 40 Years and Older Who Have Had a Mammogram in the Last 2 Years by Age Group

40-49 years    50-64 years    65 years and older



# Percent of US Women Aged 40 Years and Older Who Have Had a Mammogram in the Last 2 Years by Education Level

— No high school diploma or GED — High school diploma or GED  
— Some college or more



# Frequency of Mammography in McHenry County Women 40 Years Old and Older, 2004-2006

- Approximately 8,369 (13%) women 40 and older have never had a mammogram
  - 2,148 (26%) of these women have an income  $\leq$ \$50,000
  - 2,822 (34%) have a high school diploma/GED or less
  - 2,227 (27%) are unemployed
- Of the women who have ever had a mammography, approximately 18,908 (33%) have not had one in the last year
  - 4,611 (24%) of these women have an income  $\leq$ \$50,000
  - 3,107 (16%) have a high school diploma/GED or less
  - 3,003 (16%) are unemployed

# Cost of Breast Cancer

- Total lifetime cancer-attributable Medicare costs
  - In situ: \$21,320
  - Localized: \$26,747
  - Regional: \$40,096
  - Distant: \$52,288

# 5-Year Survival Rates based on Stage

- Localized: 98.3%
- Regional: 83.5%
- Distant: 23.3%

# Lifetime Risk of Developing Breast Cancer

*“Based on rates from 2004-2006, 12.08% of women born today will be diagnosed with cancer of the breast at some time during their lifetime. This number can also be expressed as 1 in 8 women will be diagnosed with cancer of the breast during their lifetime.”*

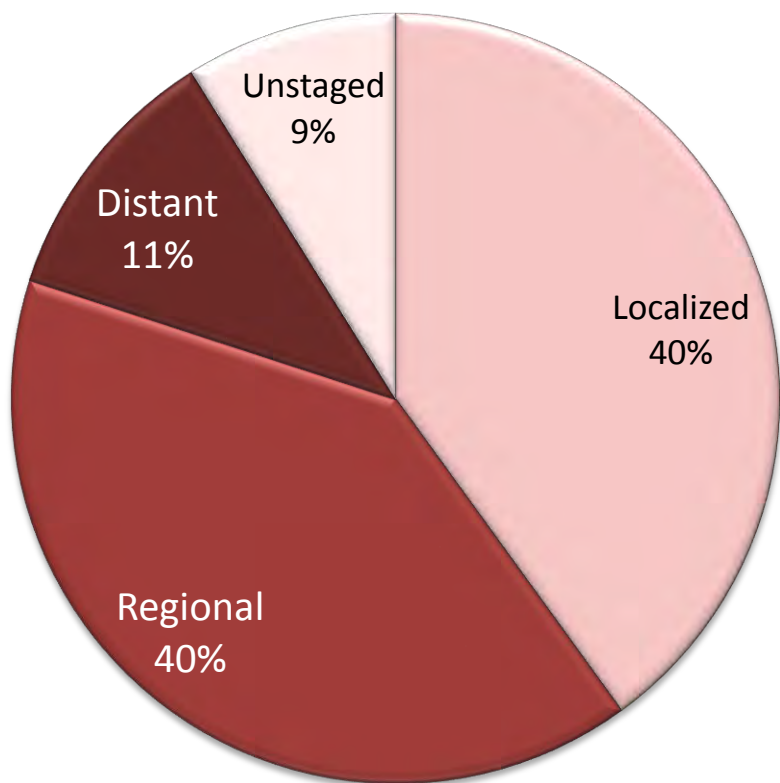
*-National Cancer Institute*

# Cervical cancer rates & cervical cancer screening stats

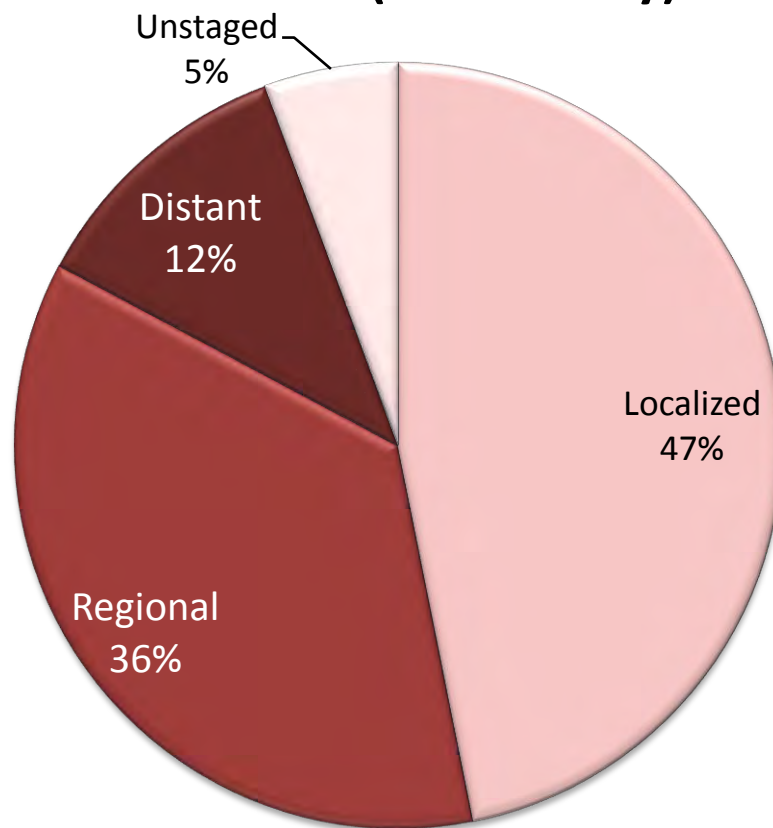
*In McHenry County for 2002-2006, the incidence of cervical cancer was 6.4 newly diagnosed cervical cancers per 100,000 women, compared to 8.2 for Illinois (whites only).*

# Percent Distribution of Stage of Cervical Cancer Diagnosis, 2002-2006

## McHenry County

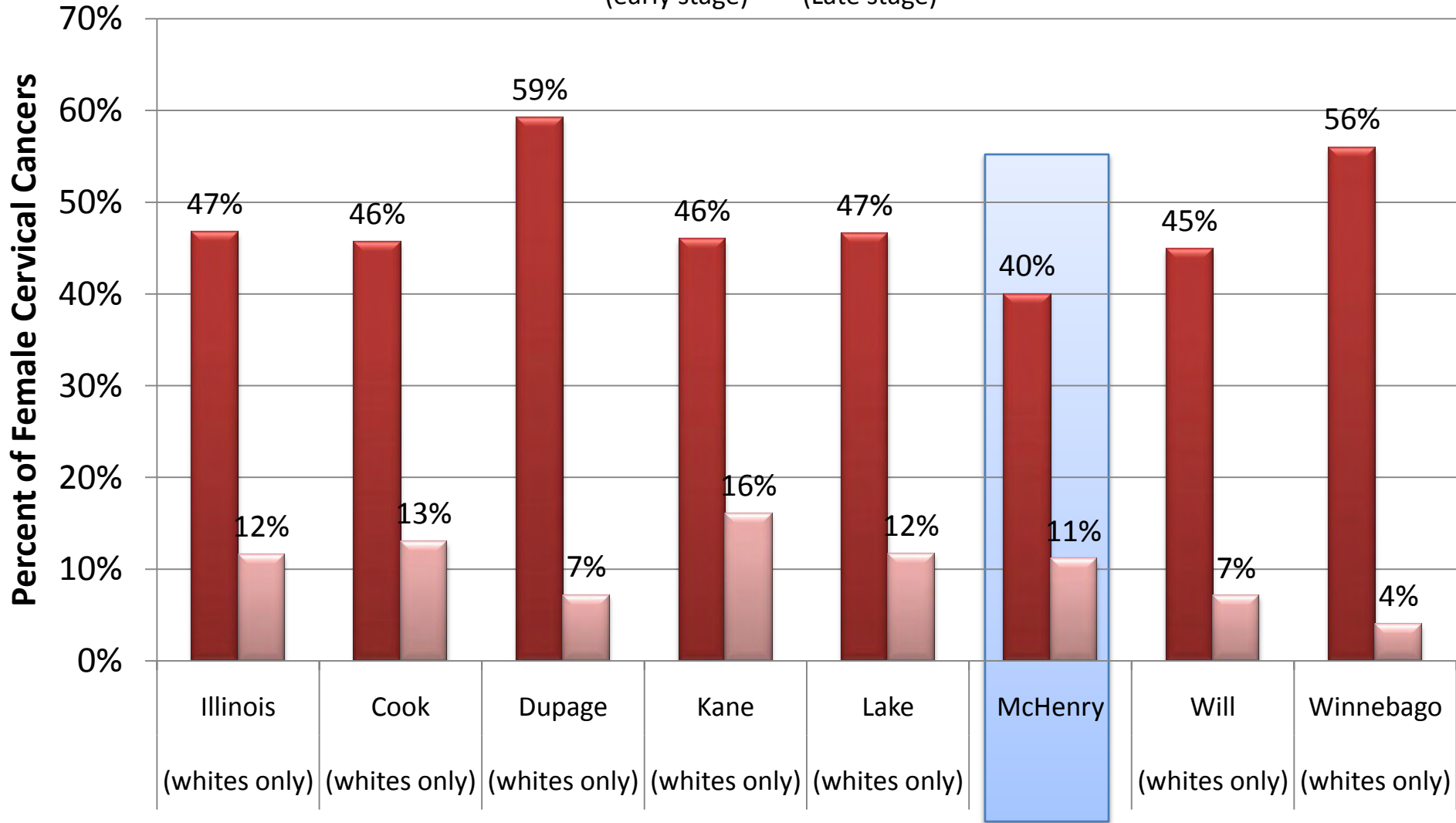


## Illinois (whites only)



# Percent of Cervical Cancer Diagnosed by Stage in Select Illinois Counties, 2002-2006

■ Localized (early stage)
 ■ Distant (Late stage)



# Pap Smear Frequency in McHenry County Women, 2007 - 2009

- Approximately 5,450 (5%) women in McHenry County have never had a pap smear
- Of the women in McHenry County who have ever had a pap smear, approximately 17,831 (17.2%) have not had one in the last year.

# McHenry County Department of Health

Illinois Breast and Cervical Cancer  
Program

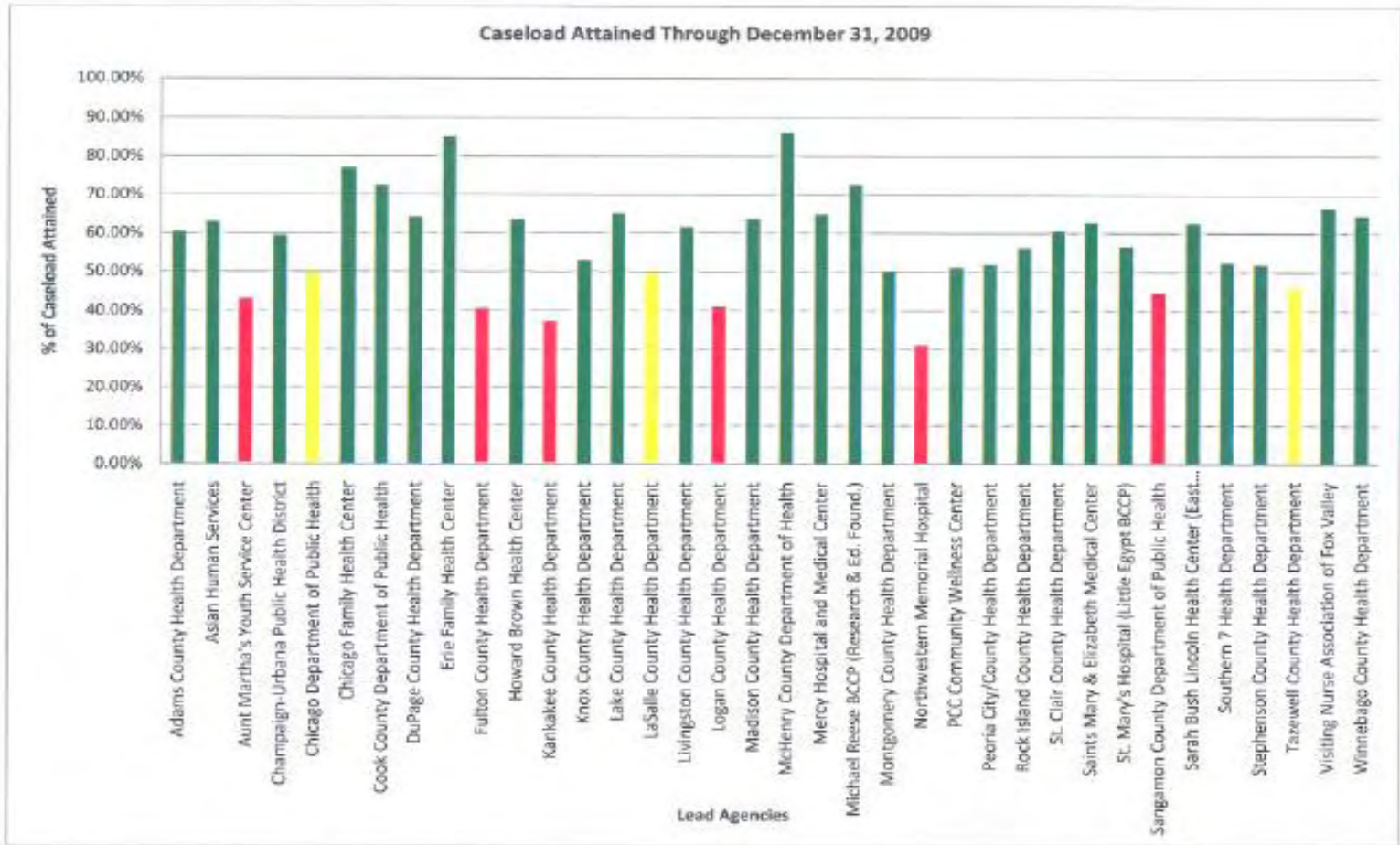
February 2010

# Program Highlights

- IBCCP lead agency established Fall 2007
- Site: 100 N. Virginia Street Crystal Lake
- Staffed by 3.7 FTE
- HCP participation
- Served 2,368 women
- Leads 37 statewide agencies for case load attainment YTD – #1 in Q2

# 2010 Program Goals

- Target Caseload of 525 by July 2010
- Reaching more uninsured women 50-64 rarely or never before screened by mammography
- Engaging opportunities to increase higher levels of awareness and providing education for breast and cervical health in our community
- Expanding and strengthening relationships to forge efforts to reach more women



NOTE: Access Community Health Network is not included above.

Source: IDPH Office of Women's Health, Illinois Breast and Cervical Cancer Program, January 2010

# Challenges

- Budget reductions – State and Federal
  - 20% less than 2009 funding
- Adjusted caseload target
  - 525; down 75 from 2009
- Prioritized screenings only since 11-09
  - only women with clinically documented symptoms admitted; all others wait-listed
- Payment/reimbursement timelines
- Provider engagement

# FY 2010 Facts

- 454 women (86% caseload) served YTD
- 958 enrollees wait-listed for breast and cervical cancer screening appointments
- 15 women referred for cancer treatment
  - 11 breast cancer (7 diagnosed thru BCCP; 4 external referrals to HFS)
  - 4 cervical cancer (3 diagnosed thru BCCP; 1 external referral to HFS)

# FY 2010 Facts

- Breast screening abnormality rate: 16%
- Cervical screening abnormality rate: 3%
- Prioritization = 61 cases approved for FY 2010 screening based on identified abnormality in 2009 screening cycle
- Grant Reimbursement on Cost Per Case with abnormalities: \$289 per case

# FY 2010 Needs

- Financial support to allow 30% of wait-listed enrolled uninsured women to complete recommended screenings
  - clinical expense fund of \$86,700 covering office visit, breast & pelvic, Pap test, mammography
  - 300 more uninsured women in McHenry County ages 40 and older would get screened and avoid potential late diagnosis