



# McHenry County Division of Transportation

Joseph R. Korpalski Jr., P.E. Director of Transportation/County Engineer

## DUNHAM ROAD over Rush Creek Bridge Replacement

Welcome to the Dunham Rd Bridge over Rush Creek Replacement website. This website is designed to provide you with general information for the project. Check in periodically to get up-to-date information.

**Project Information:** This project will replace the existing bridge built in 1970, with a one-span prestressed concrete 27-inch (depth) deck beams , with a poured in-place 5-inch thick concrete wearing surface, on integral abutments 58'-7" in length. It includes approach pavement, pavement removal, construction of HMA Full Depth pavement, shoulder widening and guardrail placement.

### Traffic Impact During Construction:

Dunham Road between Root Road and Illinois Route 23 will be closed to thru traffic starting on June 27, 2011. Access up to the bridge will be maintained for local traffic only. A marked detour will be provided using Illinois Route 23, Bunker Hill Road, Island Road, and Dunham Road. ([click here for the detour map](#)).

### News Flash:

The Road closure will go into effect at approximately noon on 6/27/2011. Please follow the marked detour route and drive safely. Erosion Control, and Bridge Demolition will start immediately.

**Project Schedule:** June 27, 2011 to approximately November 15, 2011. ([click here](#)) for additional information

**Project Progress:** Percentage Complete

0%                      25 %                      50 %                      75 %                      100%

*Please Drive Safely / Watch out for Workers*

Update: June 24, 2011



# McHenry County Division of Transportation

Joseph R. Korpalski Jr., P.E. Director of Transportation/County Engineer

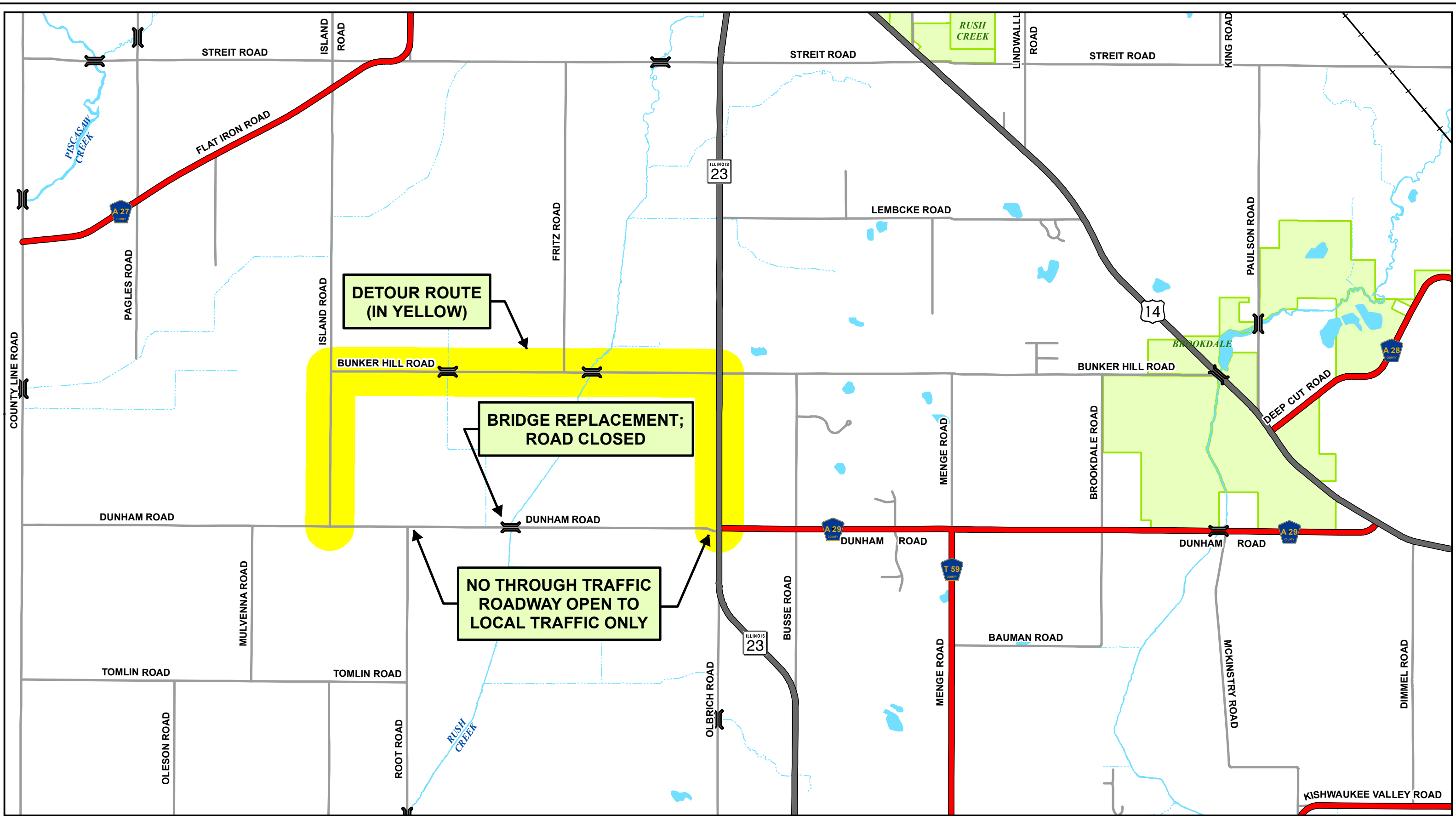
[Top](#)

**Other Navigation Links:** Utilize these links to assist you with navigation of this document.

- **Detour Map:** [\(click here\)](#)
- **Project Schedule:** [\(click here\)](#)
- **Project Contact Information:** [\(click here\)](#)
- **Project Pictures:** [\(click here\)](#)
- **Receive E-mail Updates:** [\(click here\)](#)

*Please Drive Safely / Watch out for Workers*

Update: June 24, 2011

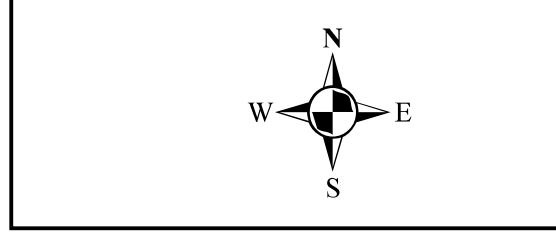


**DATE**  
June 3, 2011

**SOURCE**  
McHenry County DOT GIS

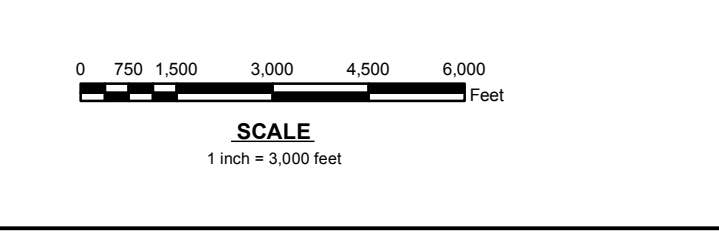
**PROJECTION**  
Transverse Mercator  
NAD 1983 StatePlane Illinois East

**DISCLAIMER**  
Information on this map may contain inaccuracies or topographical errors. Information may be changed or updated without notice. Information on this map is provided "as is" without warranty of any kind, either express or implied, including (without limitation) any implied warranties of merchantability or fitness for a particular purpose. In no event will McHenry County be liable to you or to any third party for any direct, indirect, incidental, consequential, special or exemplary damages or lost profits resulting from any use or misuse of this information. Information herein has been reproduced from original sources. Information produced on this map should not be used in place of a survey or legal documents.



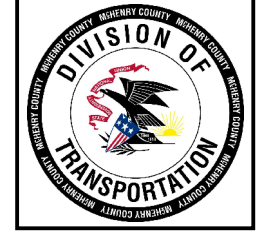
**LEGEND**

County Route	Municipal/Township Route
State/US Route	Rail Road
Interstate Route	Hydrography



**DUNHAM BRIDGE  
OVER RUSH CREEK**

McHenry County  
Division of Transportation





# McHenry County Division of Transportation

Joseph R. Korpalski Jr., P.E. Director of Transportation/County Engineer

## Project Schedule: (subject to variation)

**June 27:** Install detour signing and **close bridge site to through traffic**. Install erosion control, remove temporary traffic signals, install lane closure, and begin structure demolition.

June 30: Drive Test Piles Structure demolition and removal of existing pier.

July - August: Drive Prod. Piles. - Structure demolition and removal of existing pier.

September: Form and pour abutment and piers, set beams, form bridge deck and install rebar. Pour and cure bridge deck.

October 1 – October 31: Hot-Mix Asphalt paving, install pavement marking & complete landscaping.

**November 14: Remove detour and open roadway to through traffic.**

[\(Links\)](#)

## Project Contact Information:

### McHenry County Division of Transportation

Construction Engineer: Pablo F. Faillaci

Phone: 815-334-4982

Cell: 815-482-1063

E-mail: [pffaillaci@co.mchenry.il.us](mailto:pffaillaci@co.mchenry.il.us)

Resident Engineer: Mark R. Dammyer

Phone: 815-334-4967

Cell: 815-482-4301

E-mail: [mrdammyer@co.mchenry.il.us](mailto:mrdammyer@co.mchenry.il.us)

### Alliance Contractors:

Project Manager: Rodney Hisel

Phone: 815-338-5900

E-mail: [RHisel@AllianceContractors.com](mailto:RHisel@AllianceContractors.com)

[\(Links\)](#)

***Please Drive Safely / Watch out for Workers***

Update: June 24, 2011





