



## **McHenry County**

---

### **Division of Transportation**

**Joseph R. Korpalski, Jr., P.E.**  
Director of Transportation/County Engineer

For Immediate Release  
Date: August 25, 2010

## **County Line Road Bridge Closed Beginning Last Week of August**

The McHenry County Division of Transportation (MCDOT), in conjunction with the Marengo Township Road District, will close the County Line Road Historic Bridge over Kishwaukee River in unincorporated Marengo Township. The closure is due to a loss of structural integrity of the deck slab. Local residents are advised to use US 20 to Thorne Road to River Road as the recommended detour.

The McHenry County Division of Transportation and the Marengo Township Road District are currently considering possible options and alternatives for replacement of the bridge. The duration of the closure is indefinite; however, the bridge has been programmed for replacement with the McHenry County Division of Transportation's Five Year Highway Improvement Program.

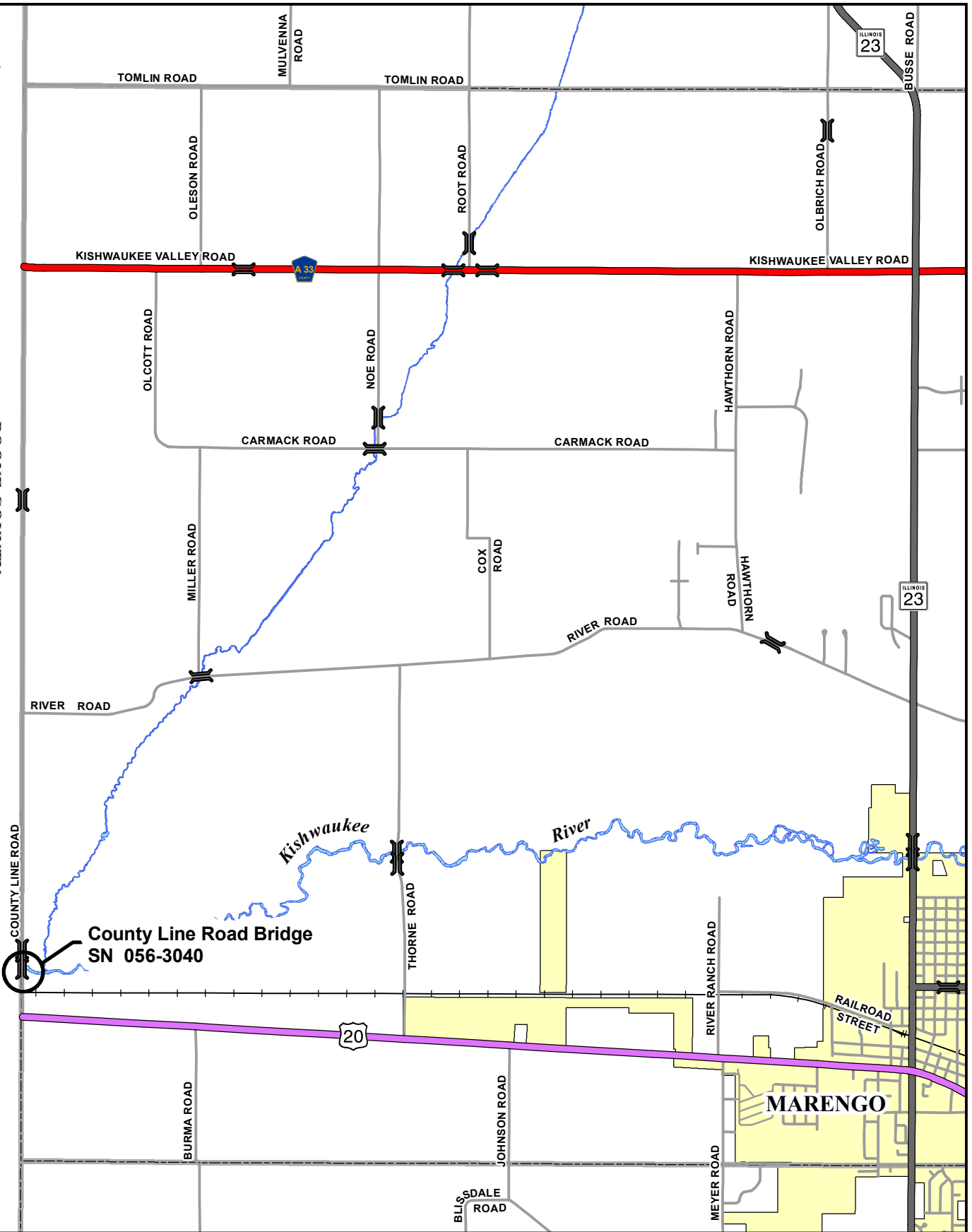
Inspections are accomplished on a routine basis and intermittently on all County Highway bridges and Township Roadway bridges throughout McHenry County. The Illinois Department of Transportation (IDOT) sets the inspection interval. The MCDOT is responsible for overseeing these inspections and reporting them to the IDOT District 1.

The County Line Road Bridge is a historic one lane bridge built in 1921 located due west of Marengo on the border with Boone County. The County Line Road Bridge crosses Kishwaukee River. Its southern terminus is at US 20 and its northern terminus is at River Road in McHenry County. See attached location map.

*The public is reminded to adhere to the warning signs posted at the bridge for No Loitering, No Jumping from Bridge, and No Trespassing. Rock and concrete have been placed under and around the bridge for scour protection of the abutments and piers and constitutes an unseen safety hazard.*



BOONE COUNTY



County Line Road Bridge  
SN 056-3040

MARENGO





**DATE**  
August 25, 2010

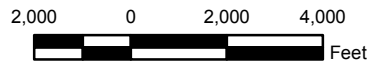
**SOURCE**  
McHenry County DOT GIS

**PROJECTION**  
Transverse Mercator  
NAD 1983 StatePlane Illinois East

**DISCLAIMER**  
Information on this map may contain inaccuracies or typographical errors. Information may be changed or updated without notice. Information on this map is provided "as-is" without warranty of any kind, either express or implied, including (without limitation) any implied warranties of merchantability or fitness for a particular purpose. In no event will McHenry County be liable to you or to any third party for any direct, indirect, incidental, consequential, special or exemplary damages or loss (profit) resulting from any use or misuse of this information. Information herein has been reproduced from original sources. Information produced on this map should not be used in place of a survey or legal documents.

**LEGEND**

-  County Route
-  Township Road
-  Bridge
-  Watercourse



**SCALE**  
1 inch equals 4,000 feet

County Line Road Bridge  
over the Kishwaukee River

Location Map

McHenry County  
Division of Transportation

